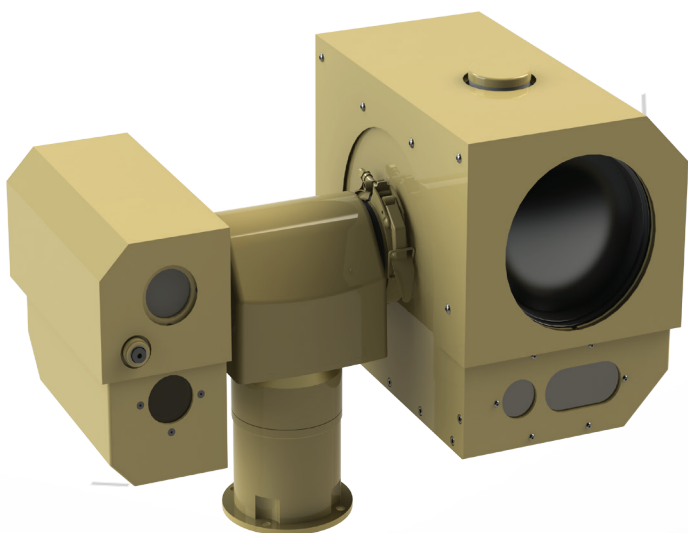


Wolf 24-3

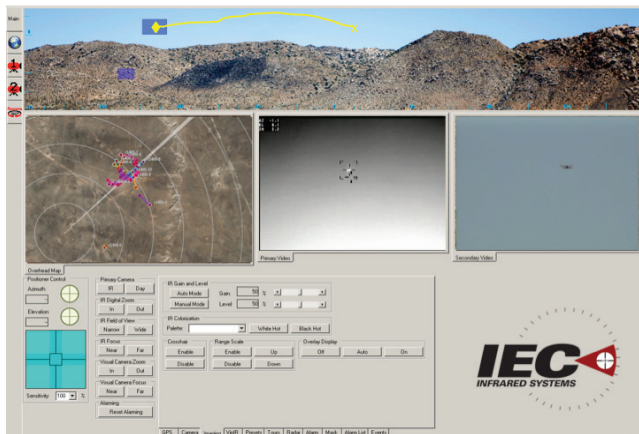
Rugged Uncooled LWIR Long Range EO/IR Surveillance



- ⊕ *LWIR 25mm-225mm Continuous Zoom*
- ⊕ *Line Replaceable Unit Configuration*
- ⊕ *Tools Free/Cable Free Payloads Swap Out in Seconds*
- ⊕ *360° Panoramic Image Creation*
- ⊕ *Optional Optical Target Tracking*
- ⊕ *Optional Multiple RF and GPS Jamming*
- ⊕ *Long-Range Human Detection (5km)*
- ⊕ *Small DJI IV Drone detection (1km)*

Wolf 24-3

Specifications



IntrudIR Alert® C² Middleware



Tactical Command Module



Thermal Detector

- 640x480 LWIR uncooled VOx 17µm
- Spectral range 7-12µm
- NETD <50 millikelvin

Thermal Optics

- 25mm-225mm f/1.2 LWIR motorized electric focus continuous optical zoom
- 24.3° to 2.8° HFOV

Phantom DJI IV Drone optical tracking to 1km

Visual Detector

- 380k EXView CCD
- Spectral range 300-750 nanometers
- Minimum sensitivity 0.01 lux

Visual Optics

- 3.4mm to 122.4mm continuous zoom
- 57.8° to 1.7° HFOV

Optional Multi-Mode Optical Tracking

- AI clutter mitigation for target classification

Optional Ground/Air Surveillance Radar

- Phantom Drone detection and tracking to 500m
- Pulse Doppler technology
- 360° w/ 20° VFOV
- Simultaneous multiple beams
- 4Hz update rate

Optional White Spotlight

- 18 million candle power
- Boresighted to EO/IR camera

Optional Mitigation

- Multiplexed jamming signal
- Operational Bands 433MHz, 915 MHz, 868Mhz
- Frequency 2400-2500Mhz WiFi RF Power 10.0 W (EIRP) Effective Isotropic Radiated Power 158W
- Frequency 5725-5825Mhz WiFi RF Power 5.0 W (EIRP) Effective Isotropic Radiated Power 79W
- Frequency 1562Mhz-1588Mhz GPS RF Power 10.0 W (EIRP) Effective Isotropic Radiated Power 158W
- DJI Phantom IV jamming to 1km
- Pan Travel: 360° continuous rotation
- Tilt Travel: Minimum +/- 90° Tilt Optional -90° to +180° Tilt
- Pan/Tilt Speed: Slow speed down to 0.002°/sec High speed up to 100°/sec
- System Weight: 70lbs dependent on payload configuration and options

Environmental

- Temperature Operational: -40° C to +60° C Storage: -46° C to +85° C

