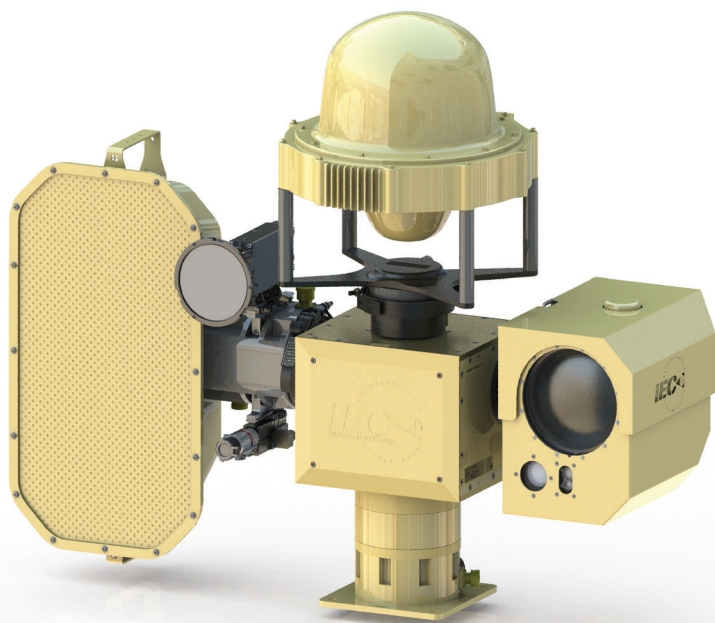


Banshee

Remote Threat Detection, Assessment & Mitigation



- ⊕ *LWIR 25mm-225mm Assessment Camera*
- ⊕ *360° Ground Surveillance Radar*
- ⊕ *143db Long Range Acoustical Device*
- ⊕ *12 million Candle Power White Spot Light*
- ⊕ *Green Laser Dazzler w/ LRF for NOHD Calculation*
- ⊕ *Line Replaceable Unit Configuration*
- ⊕ *Tools Free/Cable Free Payloads Swap Out in Seconds*
- ⊕ *Protect Unmanned Critical Assets from Remote Locations*

Banshee

Specifications



Assessment Camera

- Thermal 640x480 LWIR uncooled VOx 17µm
- Spectral range 7-12µm
- NETD <50 millikelvin
- 25mm-225mm f/1.2 motorized electric focus continuous optical zoom 24.3° to 2.8° HFOV
- Visual 380k EXView CCD
- Spectral range 300-750 nanometers
- Minimum sensitivity 0.01 lux
- 3.4mm to 122.4mm continuous zoom 57.8° to 1.7° HFOV

360° Ground Surveillance Radar

- Upright human detection to 500m
- 8hz update rate user selectable
- 360° Situational Awareness

Long Range Acoustical Device

- 143db with 1000m range
- Live or recorded commands
- Pulsing siren deters threats

White Spotlight

- 12 million candle power
- Flood to Spot zoom control
- Strobe Mode to disorient threats
- Illuminate targets to 1000m

Green Laser Dazzler

- Obstructs vision day or night
- Effective to 300m
- Integrated LRF to regulate intensity

Werewolf Positioner

- Pan Travel: 360° continuous rotation
- Tilt Travel: Minimum +/- 90° Tilt
Optional -90° to +180° Tilt
- Pan/Tilt Speed: Slow speed down to 0.002°/sec
High speed up to 100°/sec
- System Weight: 200lbs
dependent on payload configuration and options

Environmental

- Temperature
Operational: -40° C to +60° C
Storage: -46° C to +85° C

IntrudIR Alert® C² Middleware

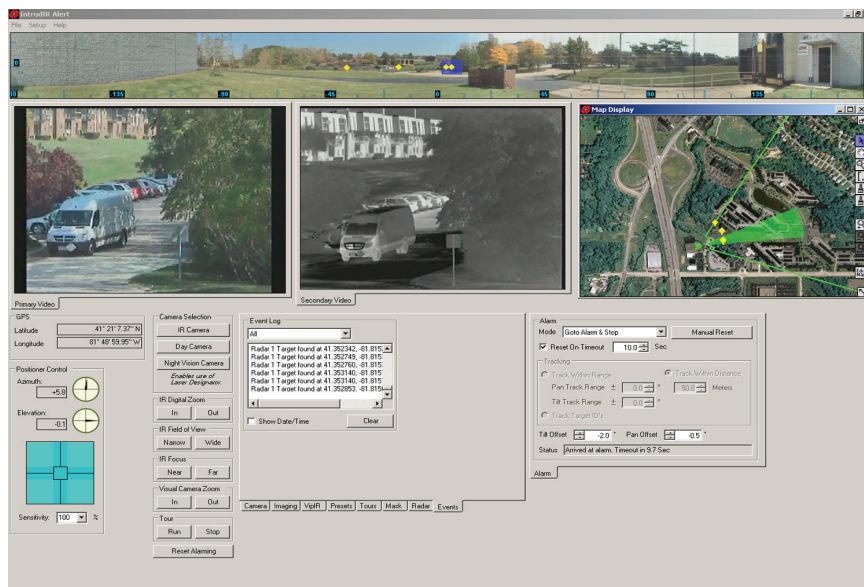
- Windows based single workstation
- Customized and scalable to user's requirements
- Allows control and configuration of all system components
- Performs auto or manual slew to cue between 360 panoramic & assessment cameras
- Intuitive and easy to operate



Green Laser Dazzler



Tactical Command Module



IntrudIR Alert® C² Middleware