

RAPTOR

Long-range Ground Radar and EO/IR Surveillance

- ⊕ *MWIR 40mm-825mm or 160mm-1000mm
Continuous Zoom*
- ⊕ *CMOS Camera 15mm-500mm or 16.7mm-2000mm
Continuous Zoom*
- ⊕ *EO/IR Human Detection to 20km, Recognition to 9km
& Identification to 6km*
- ⊕ *Line Replaceable Unit Configuration*
- ⊕ *Tools Free/Cable Free Payloads Swap out in Seconds*
- ⊕ *360° Panoramic Image Creation*
- ⊕ *Ground Radar Human Detection to 12km & Vehicle
Detection to 30+km*
- ⊕ *Full 360° or User Defined Scan Sector of Ground
Radar*
- ⊕ *Optional Optical Target Tracking*
- ⊕ *System Deploys in 1 hour*



Raptor Specifications

Thermal Detector

- 640x512 MWIR cooled InSb 15µm
- Spectral range 3-5µm
- NETD <22 millikelvin

Thermal Optics

- 40mm-825mm f/4 MWIR or 160mm-1000mm auto focus continuous optical zoom

Visual Detector

- 1952x1241 CMOS
- Spectral range 300-750 nanometers
- Minimum sensitivity 0.009 lux (color)

Visual Optics

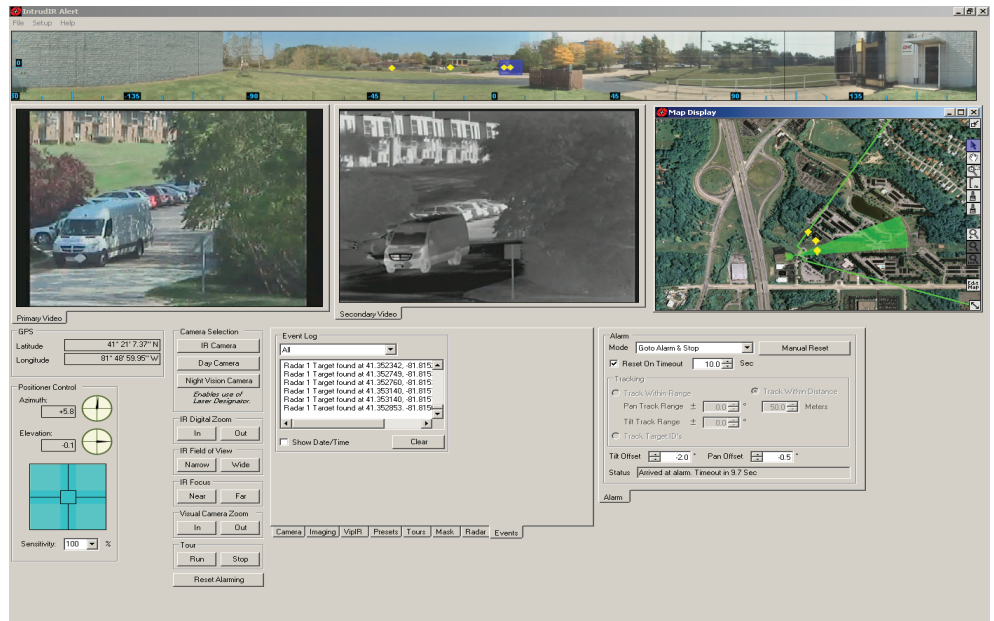
- 15mm-500mm or 16.7mm-2000mm auto focus continuous optical zoom

SRC V2E Ground Radar

- Walking detection and tracking to 12, vehicles to 30+km
- Pulse Doppler technology
- 360°/continuous rotation or user selectable scan sectors
- Lightweight at 45lbs
- Fully integrated with EO/IR camera
- Automatic or manual mode target slew to cue
- Accurate slew to cue in co-located or non co-located radar configuration

Environmental

- Temperature
Operational: -40° C to +60° C
Storage: -46° C to +85° C



Intruder Alert® C2 Middleware



Tactical Command Module