

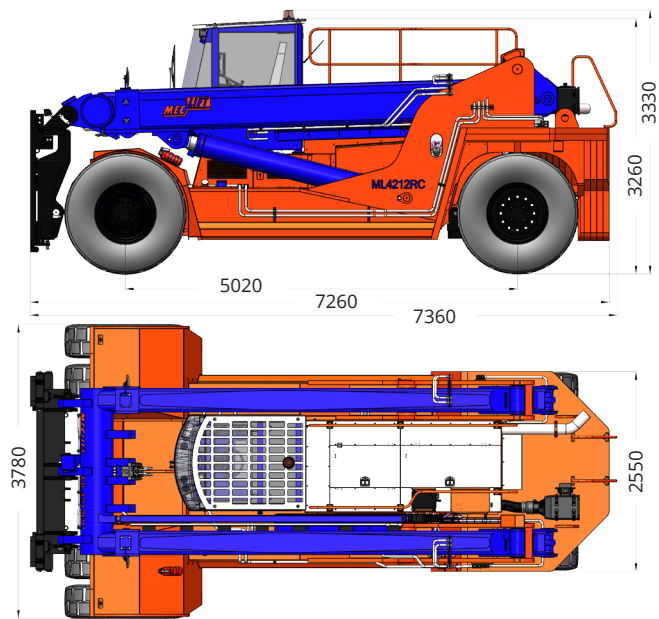
Meclift™ ML4212RC



ML4212RC

Manufacturer	Oy Meclift Ltd, Finland
Type	ML4212RC
Standard colors	Orange, Blue and Black
Lifting properties	
Lifting capacity	42,000 kg
Load center	1,200 mm
Lifting height	7,800 mm
Reach	3,250 mm
Lifting speed	0.3 m/s
Dimensions	
Length (without attachments)	7,360 mm
Width	3,780 mm
Height (min)	3,330 mm
Wheelbase	5,020 mm
Ground clearance	350 mm
Weight (without attachments)	48,500 kg
Turning radius	7,900 mm
Standard forks	W x H x L 300x130x2,400 mm
Technical specifications	
Power source	Diesel engine
Manufacturer	Cummins
Model	QSL9 Stage III/Tier 3 or Stage IV/Tier 4
Power rating	ISO 2534 239@2200 kW@rpm
Peak torque	1424@1500Nm@rpm
Transmission	3 speed automatic
Manufacturer	Dana
Model	Dana Spicer TE32
Driving speed	28 km/h

Drive axle	
Manufacturer	Axletech
Model	PRC7534W4H
Service brake	Hydraulic wet disc
Parking brake	Spring powered disc
Tyres	
Front	4x16.00-25
Rear	2x16.00-25
Options	
- Lifting attachments, i.e. Adjustable Coil Ram, Coil Clamps, Double Forks and Top Spreader for laden containers. - Other options available on request	



Variable Reach Truck

Variable Reach Truck



Oy Meclift Ltd

Hepolamminkatu 51
FI-33720 Tampere, Finland
Tel +358 20 743 1120
Fax +358 20 743 1121
sales@meclift.fi
www.meclift.fi

The manufacturer reserves the right to make changes in technical specifications as a result of product development
Our products are protected by several worldwide patents.
Meclift 2016



Meclift.fi

Variable Reach Truck

With Meclift™ ML4212RC variable reach truck, you can take your heavy lifting operations to the next level, on efficiency and safety.

ML4212RC is capable of lifting 42 tons with 1.2m load center, it can reach up to 3.25 meters and taking the lifting height as high as 7.8 meters.

With high reaching capability, Meclift ML4212RC excels on loading and unloading materials to containers. It can reach to the end of a standard 20' container and still lift 10 tons, making all logistical maneuvers significantly easier and safer.

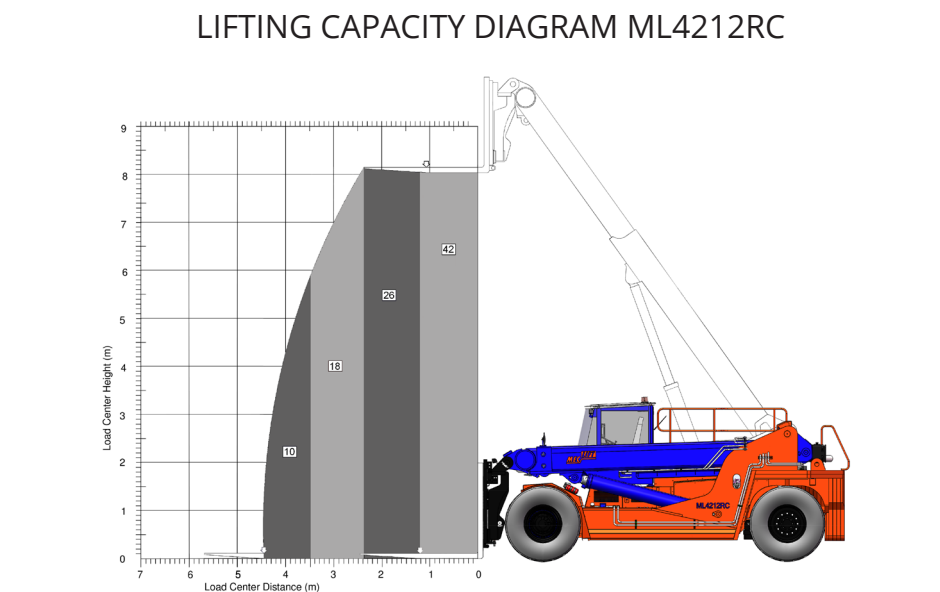
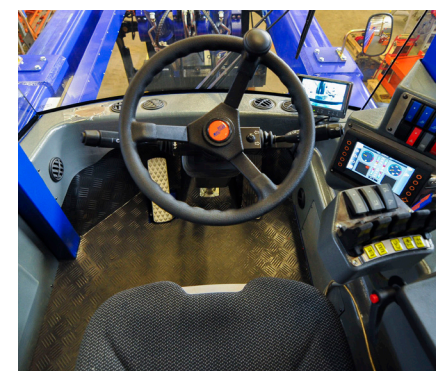
Meclift™ ML4212RC variable reach truck, is designed to help on container loading and unloading, you can do all the heavy lifting into/out a container, that is located on top of the trailer. With

Bogey rollers, you can move heavier loads than 10 tons, even while utilizing the maximum reach.

Meclift ML4212RC with the Lifting Beams is a unique combination for long and heavy object handling. With that, it is possible to place rods, pipes and tubes into middle of a 40ft container. There is no other machine in the world that do that.

ML4212RC with fork mounted top lift spreader, can put 20 - 40ft laden containers on a trailer or on a flat wagon.

With vertically movable cabin, the driver can position him/herself on the right place, to see either the forks or surrounding areas, which ever is needed at the moment.



Meclift excels on loading/unloading containers