

VINDEN LR

LONG RANGE THERMAL ZOOM CAMERAS



SIERRA-OLYMPIC
Technologies Inc.



25-150MM

25-225MM

40-300MM

The Vinden LR series provides long range thermal imaging with powerful continuous zoom optics in an OEM-friendly package. Several zoom lens options offer a narrow horizontal field of view (HFOV) as small as 1.5° without compromise to optical speed or sensitivity. Highly tuned one-touch autofocus operates quickly and reliably throughout the zoom range.

The Vinden LR's 12- μ m 640 x 480 LWIR thermal imaging core provides high sensitivity at up to 60Hz framerate. The OEM camera module provides on-board image processing, on-board recording and storage, auto-focus, electronic image stabilization, advanced image processing, H.264 IP encoding and more. The long wave infrared (LWIR) camera is regulated under the U.S. EAR regulations (non-ITAR) and can be purchased with a 25-150mm, 25-225mm, or 40-300mm continuous zoom lens.

APPLICATIONS:

Vinden LR cameras are ideal for integrators that design thermal and multi-sensor systems for defense, security, surveillance, border, port and base security applications.

FEATURE HIGHLIGHTS:

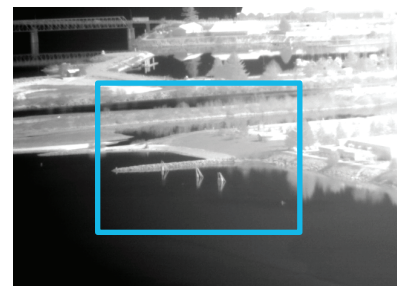
- + 12- μ m 640x480 resolution
- + 60Hz maximum framerate
- + Three lens options between 17.5-1.5° HFOV
- + One-touch autofocus
- + Analog NTSC/PAL, CameraLink® and H.264 IP video outputs
- + Ethernet control connectivity
- + Advanced image processing
- + 32GB on-board video storage
- + Athermalized and parfocal continuous zoom optics
- + Hard-carbon, IP-67 front element
- + Non-ITAR controlled



40- 300MM LENS: WIDE



40- 300MM LENS



40- 300MM LENS



40- 300MM LENS: NARROW

VINDEN LR

LONG RANGE THERMAL ZOOM CAMERAS



SYSTEM FEATURES:

Focal Plane Array			
Resolution	640x480		
Sensor	Uncooled VOx Microbolometer		
Pitch	12µm		
Wavelength	7.5 - 13 µm		
NETD	<50 mK		
Framerate	60Hz, 7.5Hz		
Optics, Size, and Weight			
Part Number	SL-VN-67-D0-00 SL-VN-66-D0-00	SL-VN-67-B0-00 SL-VN-66-B0-00	SL-VN-67-C0-00 SL-VN-66-C0-00
Focal Length (mm)	25-150	25-225	40-300
HFOV (deg)	17.5 - 3	17.5 - 2	11 - 1.5
F#	1.4	1.5	1.5
Weight (approx)	2240g (4.9lb)	4457g (9.8lb)	10465g (23.0lb)
Envelope Dimensions (L x Dia) (approx)	203 x 130 mm 7.9 x 5.1 in"	288 x 178 mm 11.3 x 7.0 in	367 x 250 mm 14.4 x 9.8 in
Digital Zoom	4x	4x	4x
Optical Zoom	6x	8x	9x
Coating	Hard Carbon		
Interface			
Analog Video Output	NTSC PAL		
Digital Video Output	16-bit CameraLink		
IP Video Output	MJPEG or H.264 Encoded		
IP Broadcast	Unicast / Multicast		
System Control	Serial or Ethernet		
Onboard Video Storage	Up to 32GB microSD		
Environmental			
Operating Temperature Range	-20 to +67C		
Shock	Operating: 10G / Non-operating: 70G		
Power	12VDC / 5W nominal (6.3W peak) consumption		
Mounting	1/4-20 Tripod Mount		
Certification	RoHS		

Specifications and descriptions subject to change without notice.

ADDITIONAL FEATURES:

- + User color palettes / LUT
- + Shutter and Scene-based NUC
- + Spatial/temporal De-noise
- + CLAHE/LAP alpha blending
- + Optional Target Tracking and Detection
- + Electronic Stabilization
- + Picoblade and FFC hardware interfaces
- + Simultaneous analog/digital output

EXPORT CLASSIFICATION:

Please review regulations at www.sierraolympic.com.

- + 7.5Hz- ECCN 6A993. Products are exportable without license for non-military applications to all countries but embargoed countries. End-use documentation required.
- + 60Hz- ECCN 6A003.b.4.b. Products require a license for export. EU/ NATO countries, Australia, S. Korea, Japan, New Zealand, Argentina are eligible for STA license exemption. Customer and end-use documentation required. Re-export is controlled under STA rules.