

We
Design
Make
Integrate
Support

Our Story

Marshall Aerospace and Defence Group is a long standing partner to military users around the world, providing design, manufacture, and through life support for all of our solutions.

We are a leading integrator and supplier of protected workspaces, a means to protect equipment and provide personnel in the most arduous and difficult environments with the appropriate workspaces.

As a division within Marshall based at Cambridge in the UK, Land Systems was established in 1946, supporting the UK Ministry of Defence in the supply of vehicle based shelters and bodies. Today we are an international company providing solutions and services to a global market.

Our manufacturing and Head Office facilities are in the UK and as part of Marshall, we also operate and offer support through our international offices in Ottawa Canada, Oslo Norway, Leiden the Netherlands, Richmond Australia and Abu Dhabi in the United Arab Emirates.



► Our extensive capabilities;
your **partner** of choice ◀

Partnership

At the heart of our capability are design, development, systems engineering and project management of complex, integrated workspaces and vehicle systems for defence and security applications.

Our integrated solutions are used for C4ISR, Medical, Forensic and Medical Analysis, Command and Control, and Workshop applications.

Proven shelter designs can provide protection from CBRN, Blast, RFI and EMP.

As a prime contractor, or first tier supplier, our management and systems engineering capability ensures rapid delivery of high quality, standard systems. As a partner of choice, we support our customers in early requirements capture and work to provide a low risk approach to any contract.



Proven Capability

Marshall has supplied products and services to security and military end users throughout the world, including:

United Kingdom Ministry of Defence
Swedish Ministry of Defence (FMV)
Netherlands Ministry of Defence
Saudi Arabian National Guard
Canadian DND
Italian Military Medical Services

Norwegian Defence Logistics Organisation
French Ministry of Defence
Australian Defence Force
New Zealand Ministry of Defence
NSPA (NATO)

BAE SYSTEMS
Thales
Raytheon
Lockheed Martin
Airbus
KBR
CMSI

RMMV Man
Patria
General Dynamics
CGI
Boeing
UTACS

► Our proven products and services;
your **reliable** partner◀



Working with Us

We develop standard products and systems and then utilise our extensive systems engineering expertise to bring about a bespoke solution to your requirement. By adopting this approach we reduce risk, decrease through life overall system costs, ability to deliver our solutions quicker, provide upgrades more efficiently, reduce the training burden, increase the interoperability between systems of the same design type, provide spares and maintenance support more efficiently and reduce obsolescence management.

Our approach to the market and our customer is a long term commitment as we understand your requirement of supply chain support over a significant period of time, that you may require assistance in business development to negotiate contracts and also the inevitable changes to specifications arising from individual user requirements, to full Integrated Logistic Support (ILS) training.

Marshall has proven to be a formidable partner and sub-contractor in supporting our customers to maintain existing contracts and winning future business. We are proud to be recognised by many of our customers as their supplier of choice.

Manufacturing

Our manufacturing capability is all-embracing, stretching from initial material forming through to our extensive paint, finishing and testing facilities. We are ISO 9001 certified and therefore hold comprehensive processes and procedures governing all aspects of production.

System Integration support

In support of our system integration capability, we maintain the skills to cover all areas from requirement capture, the development and conflict resolution to system engineering, engineering design, to human factors, mechanical, electrical/electronic, stress, safety and ILS engineering.

Delivery

Our commitment is to deliver on-time and to budget on every project that we are contracted. We are proud to be recognised by both our military customers and industry partners, for our exceptional service and for our quality delivery.

► Our bespoke solutions;
your requirements **fulfilled** ◀





Through Life Support

Our support operations are fully focused on ensuring that our products are always available for operations. We have a proven track record of providing complete support solutions and we are fully committed to ensuring support is equally considered from the outset of a programme along with the design.

We achieve this by applying the ILS philosophy of balancing the reliability, maintainability and supportability characteristics of the system to achieve not only the optimum Life Cycle cost but also to ensure that a high availability is maintained of the system for operations.

During the transition phase from manufacture to in-service we offer comprehensive support packages focused on through life capability management both globally and in theatre.

This in-service support is undertaken by a dedicated single point of contact who will manage all support including maintenance, servicing, training technical support, documentation, obsolescence management and spares management.

► Our continued support;
your maximum **capability** ◀





Deployable Systems and Shelters

For the past six decades, our experience and expertise has positioned us at the forefront of the market for complex, deployable, integrated workspace solutions. These can be both hard and soft skinned shelters and fitted with not only the complete electrical and water requirements but also CBRN protection and decontamination facilities.

We excel in the design, development and project management of bespoke, high-quality robust solutions that satisfy requirements across a range of fields including: deployable C4, medical, scientific investigation, hospital, command and control, specialist workshops, air traffic control and ground control stations.

Shelters and Expandable Systems

We can provide shelters for use across a wide range of deployments from hospitals to command centres to workshops. These can be either soft or hard skinned depending on the requirement, for example in a field hospital the main units such as the operating theatre, sterilisation facilities and laboratories might be in hard shelters whilst the wards, staff accommodation and cooking facilities could be in tents.

Our hard skinned shelters can be manufactured to meet a range of requirements including varying levels of ballistic protection, EMC protection, air conditioning, fitted with DROPS hooks and be expandable using our patented Matrix™ solution

► Our competence in deployable systems;
your route to **success**◀



ISR Infrastructure

The effects of ISR (Intelligence, Surveillance and Reconnaissance) are potentially game-changing in the defence and security arena. Mobile ISR capability makes the asset even more valuable as it enables the commander to have the technology close to the task.

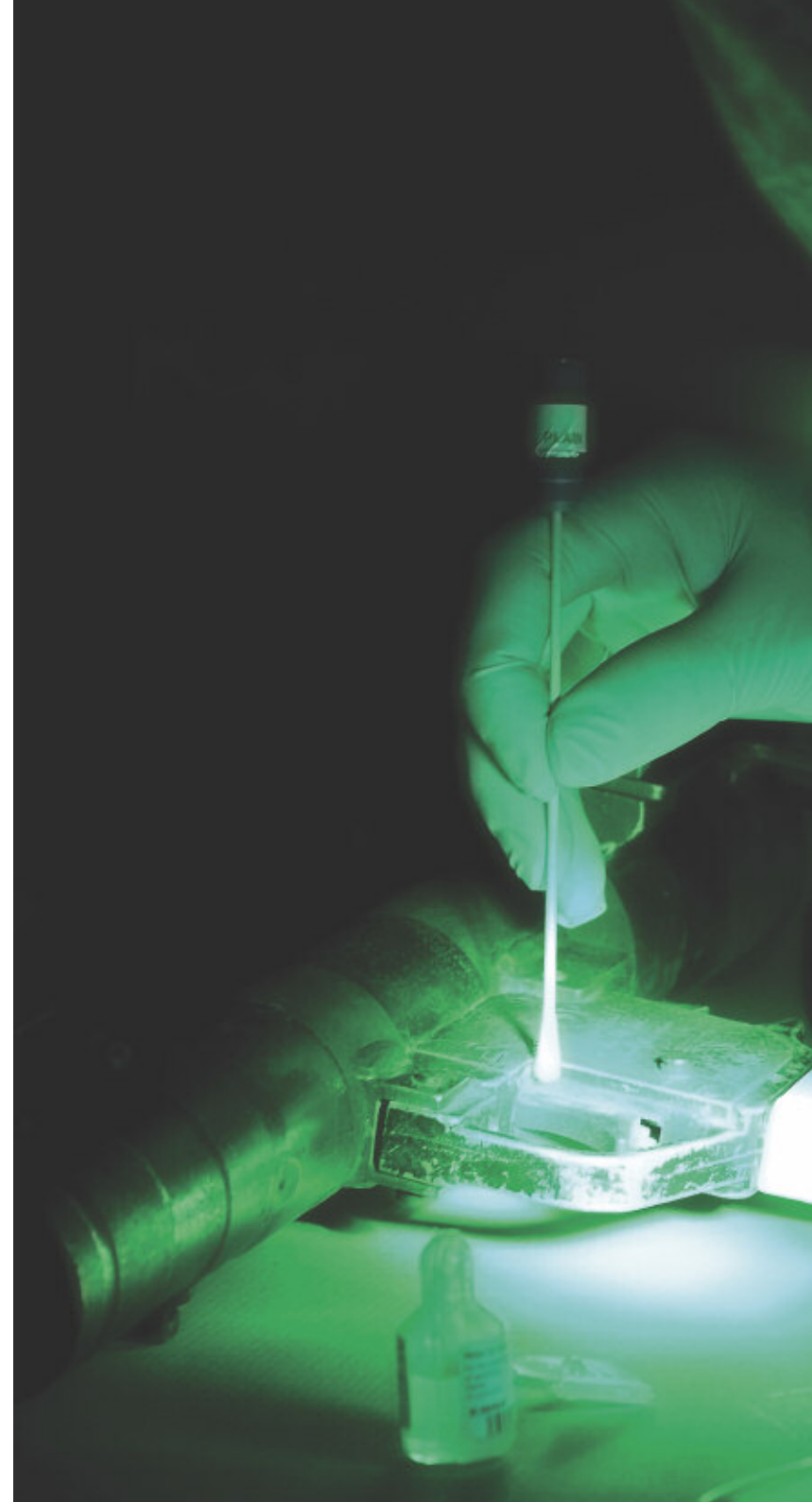
Marshall has extensive experience of designing, integrating and delivering ISR vehicles and shelters. Working in partnership with suppliers and prime contractors, we have developed systems to a range of specifications, which are in service all over the world.

Our previous projects include:

- Air defence systems
- Geospatial Intelligence mobile work rooms
- Staff working environments
- Radio broadcast control stations
- Ground control stations

Our ISR mobile and deployable systems are designed and manufactured to survive operations whilst deployed in hostile environments. They are highly-mobile, quickly-deployable, autonomous, well-protected, ruggedised systems that allow users to maximise the net-centric warfare environment.

► Our mobile infrastructures;
your **guaranteed** success ◀





Mobile Forensic Laboratories

Our success in the design, manufacture and integration of complex deployable medical and infrastructure solutions has led to a natural transition into the mobile laboratory and forensic environment.

Our approach to partnership with specialist suppliers, alongside close ties with international government agencies and subject matter experts, has ensured our swift progression to world leader status in the provision of mobile forensic capabilities.

Whether within a military, law enforcement, disaster or humanitarian context, we enable forensic sampling, analysis and profiling through to detailed DNA investigation of buccal, blood, hair, tissue and contact traces. The rapid mobility of our solutions allows for time critical, point of incident, clean room analysis.

► Our extensive medical support experience;
your **reassurance** when it matters ◀

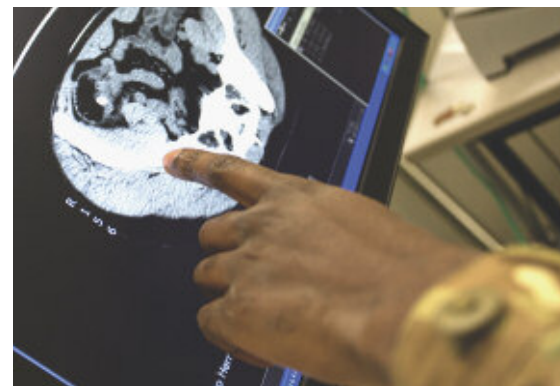
Medical Systems

Medical support to military and humanitarian operations has a unique profile. The subject is emotive, public and affects a nation's willingness and ability to undertake such operations.

Marshall has developed a range of medical treatment facilities for both military and humanitarian aid and disaster relief or HADR to meet these.

We understand the specialist and critical nature of military, security or disaster medical support requirements, right from the initial point of injury and throughout the care chain to evacuation to the home base and eventual rehabilitation. Harnessing our extensive experience alongside that of key specialised partners, we strive to deliver first-class deployable systems that replicate as closely as possible the facilities available to patients in conventional hospitals.

Our facilities range from complete hospitals to medical laboratories, sterilisation units, deployable CT Scanners, operating theatres and all the infrastructure to make this work.









Camp Infrastructure

In modern day deployed operations, requirements for camp infrastructure are ever changing.

Complex in nature due to camp location and size, we facilitate infrastructure requirements from large base camp installations of great technical complexity to smaller forward patrol bases, requiring more intuitive design and technologies.

We take full account of these complexities and apply our significant experience of shelter structure design and integration, to supply a diverse range of modular and scalable deployable infrastructure capabilities.

Thanks to our in-depth understanding and effective requirements capture, we satisfy camp infrastructure demands across power, water and waste management, secure storage including fuel and munitions storage through to staff working environments, workshops and catering facilities.

► Our camp infrastructure capability;
Your mission **accomplished** ◀



CBRN Systems

The increasing prevalence of chemical weapons worldwide and the ever-present risk of natural disasters, industrial incidents and acts of terror, the threat from CBRN (Chemical, Biological, Radiological and Nuclear) hazards is only too real.

Fast, reliable detection of CBRN materials and other toxic substances – even in difficult conditions and harsh environments – is a life-or-death capability requirement. If military, government and civilian organisations are to mitigate the risk posed by CBRN materials, real-time hazard awareness and analysis is imperative: before, during and after an incident. This includes CBRN hazard detection, protection from the associated dangers, Collective Protection (COLPRO), CBRN decontamination and post-incident contaminant removal.

Marshall works with some of the world's leading suppliers of CBRN equipment to provide a fully-integrated mobile solution which can be fitted into our deployable expandable shelters or onto vehicles.

► Our fully integrated mobile solution;
your **reliable** detection of CBRN materials ◀





Vehicle Systems

Our Vehicle Engineering team carries out modifications to military and commercial vehicles, ensuring they are fit for the vehicle's role. These include ambulance fits and special mission vehicles such as Counter-IED, Explosive Ordnance and Electronic Counter Measures vehicles.

In partnership with the vehicle OEM, customer and end user, we design and manufacture solutions that we integrate onto the vehicle body and enhance vehicle survivability including armouring and riot protection equipment.

We also work closely with targeted partners to select, validate and install vehicle mounted sub-systems including tail lifts, cranes and winches.

Marshall has many years' experience in designing and producing wheeled ambulance systems for a variety of vehicle platforms. We have also produced stretcher systems for a range of armoured ambulances. Our solutions are equally applicable to both military conflict and humanitarian aid.



► Our military and commercial modifications;
your **enhanced** capability ◀



Simulation

Marshall has provided part task simulators for the aerospace industry for many years, recently it has capitalised on its knowledge base to develop a driver trainer simulator for the British Army's AJAX armoured vehicle programme. Working as part of a team led by XPI, part of the Thales Group, we are providing static and full motion simulators.

We also provide command trainers for vehicle turrets which can fully replicate the layout or can link to the vehicle to input imagery and situational awareness to train crews in their own environment. Simulation is most effective when the instructor is able to provide full after action analysis and Marshall has the engineering skills to facilitate this.



► Our industry experience;
your **simulator** requirements met ◀

We have won two **Queen's Awards** for Innovation and for Export

We have built over **80,000** military vehicle bodies

We have supplied over **6,000** shelters

We supplied a workshop in less than **28 days** over Christmas

Marshall Aerospace and Defence Group
Airport House The Airport Cambridge CB5 8RX UK
T +44 (0) 1223 373737 marshalladg.com