

DANTHERMGROUP



PRODUCT RANGE

## **MOBILE**

Heaters, coolers and air-conditioning, dehumidifiers, air movers, blowers

# WHY CHOOSE OUR MOBILE PRODUCTS



## CHOOSING THE BEST SOLUTION

Our mobile products can be used in many different applications such as industry, construction, homes and offices.



## USE THE SAME UNIT IN DIFFERENT PLACES

Our heaters, dehumidifiers and air coolers are all portable.



## REDUCE OPERATING COSTS

We focus on developing energy saving units.



## CREATING HEALTHY ENVIRONMENTS

Our dehumidifiers prevent mould and bacteria development and keep stored goods dry.



## SAVE TIME AND MONEY

Our dehumidifiers speed up many renovation and construction works and our heaters warm up quickly.



## WORK IN HEALTHY CONDITIONS

Our portable coolers and air-conditioners keep temperature and humidity at a comfortable level.



## PROTECTING THE ENVIRONMENT

Our development teams focus on reducing the carbon foot print by making our products as environmentally friendly as possible.



## USER AND MAINTENANCE FRIENDLY

Our products are easy to install, use and maintain.



# INDEX



## TO HEAT

### Portable direct oil fired air heaters

Low oil pressure.....	8
High oil pressure.....	9

### Portable indirect oil fired air heaters

High oil pressure .....	10
-------------------------	----

### Portable indirect oil fired air heaters BV 500

With separate Riello oil burner.....	12
--------------------------------------	----

### Portable indirect oil fired air heaters AIR-BUS

With separate Riello oil burner.....	14
--------------------------------------	----

### Portable indirect oil fired air heaters VA-M

Ruggedized heaters.....	16
-------------------------	----

### Direct gas fired air heaters (propane-butane)

Hybrid.....	17
Mechanic.....	18
Electronic.....	19

### Infrared oil fired heaters

Infrared heaters.....	20
Hybrid.....	21
Compact.....	22
High output.....	23

### Infrared electric heaters

Short wave and long wave.....	24
-------------------------------	----

### Portable air heaters

Electric.....	25
Ductable electric.....	26



## TO COOL

### Mobile air cooling

Commercial.....	27
-----------------	----

### Mobile air cooling

Industrial.....	29
-----------------	----

### Air-conditioning

Commercial.....	30
Industrial.....	31

### Mobile cooling

Container cooling.....	32
Tent cooling.....	35



## TO DRY

### Refrigerant dehumidifiers

Construction and rental.....	41
Restoration.....	45
General purpose.....	48
Commercial.....	50
Industrial.....	52
Home and office.....	55

### Professional water damage drying

Side channel compressors.....	56
AERCUBE system.....	58
Restoration.....	59
Calibrated energy meter.....	63

### Adsorption dehumidifiers

Domestic and commercial.....	64
Industrial.....	65



## TO VENTILATE

### Air circulators

Large metal.....	66
------------------	----

### Blowers and air circulators

Compact metal.....	67
Compact plastic.....	68
Air circulator.....	69

### Air filtration

Air purifier.....	70
-------------------	----

### Mobile ventilation

Container ventilation.....	71
----------------------------	----



## TO CONTROL

### Remote climate control

Intelligent monitoring.....	72
-----------------------------	----



# PORTABLE DIRECT OIL FIRED AIR HEATERS

## LOW OIL PRESSURE



**B 35**  
**B 70**



**B 100**  
**B 150**



**B 300**



### Features

- High air flow
- Optional room thermostat
- Two oil filters – oil tank filter and suction filter
- Thermally protected motor
- Electronic flame control with photocell
- Stainless steel combustion chamber
- Trolley included for B 100, B 150 and B 300
- Oil tank with level indicator
- Designed for easy handling and transportation
- Easy maintenance

### Optional accessories



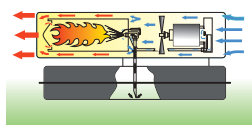
**Analog thermostat**  
TH5 with cable  
3m, 10m



**Digital thermostat**  
THD with 5m cable  
for CED models



**Trolley**  
B 35, B 70



### Applications

- Construction sites
- Heating roadworks
- Workshop and warehouse space heating
- Greenhouses and storage facilities



Specifications	Units	B 35	B 70	B 100	B 150	B 300
Heating power	kW	10	20	29	44	44/88
	Btu/h	34,200	68,300	99,300	150,500	150,500-301,000
	kcal/h	8,600	17,200	25,000	37,900	37,900-75,800
Air flow	m <sup>3</sup> /h	280	400	800	900	900/1,800
Fuel autonomy	h	16	10	16	10	23/12
Thermostat control		Analog or digital	Analog or digital	Analog or digital	Analog or digital	Analog or digital
Fuel consumption	kg/h	0.8	1.6	2.3	3.5	3.5/7
Power supply	V/Hz	220/240/50-60	220/240/50-60	220/240/50-60	220/240/50-60	220/240/50-60
Electric power	kW	0.08	0.18	0.23	0.28	0.28/0.56
Rated current	A	0.35	0.8	1.0	1.2	1.2/2.4
Protection		IP41	IP41	IP41	IP41	IP41
Tank capacity	l	15	19	44	44	105
Product size (l x w x h)	mm	745 x 300 x 405	745 x 300 x 405	1075 x 600 x 480	1075 x 600 x 480	1240 x 670 x 640
Weight	kg	14	15	25	25	53
Dual voltage		No	No	Available	Available	No



## PORTABLE DIRECT OIL FIRED AIR HEATERS

# HIGH OIL PRESSURE

TO HEAT



**B 180**



**B 230  
B 360**

### Optional accessories



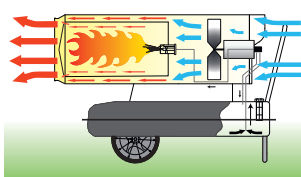
**Analog thermostat  
TH5 with cable**  
3m, 10m



**Fuel pre-heater**  
B 180  
B 230, B 360



**Digital thermostat  
THD with 5m cable**  
for CED models



### Features

- Optional room thermostat
- Optional fuel pre-heater
- Overheat thermostat
- Post ventilation
- Thermally protected motor
- Transparent external suction filter
- Three oil filters – oil pump filter, suction filter and inlet filter
- Electronic flame control with photocell
- Stainless steel combustion chamber
- Oil tank with level indicator
- Trolley included
- Snorkel
- Easy maintenance with external pump
- Diagnostic LED

### Applications

- Construction sites and heating roadworks
- Workshop and warehouse space heating
- Greenhouses and storage facilities



Specifications	Units	B 180	B 230	B 360
Heating power	kW	48	65	111
	Btu/h	165,000	222,000	379,000
	kcal/h	41,200	56,000	95,460
Air flow	m <sup>3</sup> /h	1,550	3,000	3,300
Fuel autonomy	h	8	10	10
Thermostat control		Analog or digital	Analog or digital	Analog or digital
Fuel consumption	kg/h	3.8	5.2	8.83
Power supply	V/Hz	220-240/1ph/50	220-240/1ph/50	220-240/1ph/50-60
Electric power	kW	0.3	0.8	1.06
Rated current	A	1.5	3.5	4.6
Protection		IP41	IP41	IP41
Tank capacity	l	36	65	105
Product size (l x w x h)	mm	1165 x 380 x 550	1235 x 575 x 790	1600 x 700 x 940
Weight	kg	30	57	84



## PORTABLE INDIRECT OIL FIRED AIR HEATERS

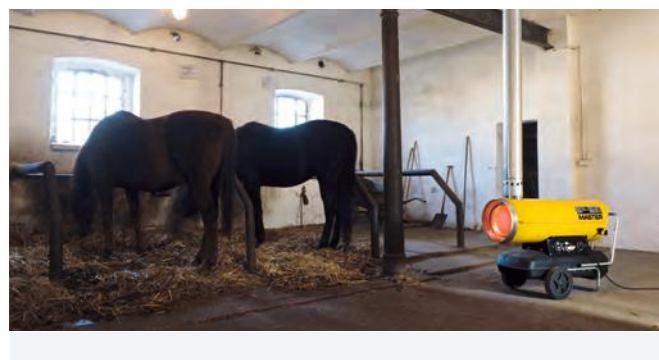
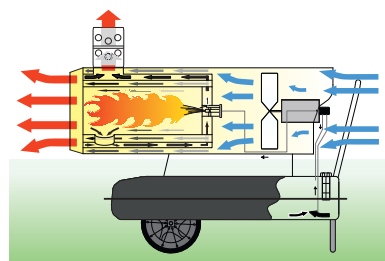
# HIGH OIL PRESSURE



**BV 77**



**BV 110  
BV 170  
BV 290**



### Features

- Clean hot air
- Duct connection
- Flue gas exhaust
- Heat exchanger
- Optional room thermostat
- Optional fuel pre-heater
- Overheat thermostat
- Post ventilation
- Thermally protected motor
- Transparent external suction filter
- Three oil filters – oil pump filter, suction filter and inlet filter
- Electronic flame control with photocell
- Stainless steel combustion chamber
- Oil tank with level indicator
- Trolley included
- Snorkel
- Easy maintenance with external pump
- Diagnostic LED

### Applications

- Construction sites and heating roadworks
- Workshop and warehouse space heating
- Agriculture
- Events and military and emergency space heating



Specifications	Units	BV 77	BV 110	BV 170	BV 290
Heating power	kW	21	34	49	85
	Btu/h	68,300	112,800	160,400	276,300
	kcal/h	17,200	28,400	40,400	69,600
Air flow	m <sup>3</sup> /h	1,550	1,800	1,800	3,300
Fuel autonomy	h	19	21	14	13
Thermostat control		Analog or digital	Analog or digital	Analog or digital	Analog or digital
Fuel consumption	kg/h	1.67	2.71	3.9	6.8
Power supply	V/Hz	220-240/1ph/50	220-240/1ph/50	220-240/1ph/50	220-240/1ph/50-60
Electric power	kW	0.3	0.8	0.8	1.06
Rated current	A	1.5	3.5	3.5	4.6
Protection		IP41	IP41	IP41	IP41
Tank capacity	l	36	65	65	105
Flue tube	Ø mm	120	150	150	150
Blast opening	Ø mm	230	340	340	400
Product size (l x w x h)	mm	1130 x 380 x 660	1235 x 575 x 1000	1350 x 575 x 1000	1600 x 700 x 1150
Weight	kg	33	61	65	100
Dual voltage		Available	No	Available	Available

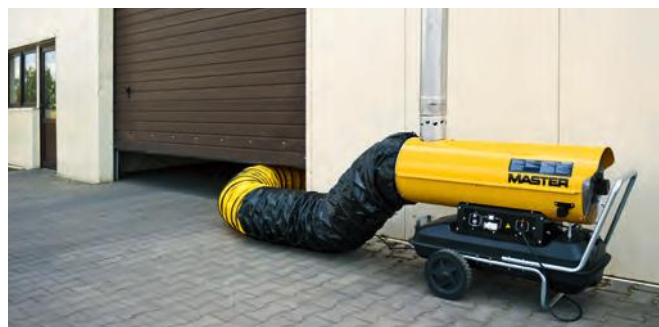




# PORTABLE INDIRECT OIL FIRED AIR HEATERS

## HIGH OIL PRESSURE

TO HEAT



### Optional accessories



#### Analog thermostat TH5 with cable

3m  
10m



#### Digital thermostat THD

##### with 5 m cable

for heaters made in Oct 2015 or later



#### Fuel pre-heater

BV 77

BV 110, BV 170, BV 290



#### Flexible tubes - 1-way outlet

BV 77 - Ø 305mm - 3m  
BV 77 - Ø 305mm - 7.6m  
BV 110, BV 170 - Ø 407mm - 7.6m  
BV 290 - Ø 610mm - 7.6m



#### Adaptor ring kit

BV 77 - Ø 294mm  
BV 110, BV 170 - Ø 400mm  
BV 290 - Ø 600mm



#### 2-way outlet

BV 110, BV 170 - 2 x Ø 310mm  
BV 290 - 2 x Ø 410mm

#### Flexible tubes - 2-way outlet

BV 110, BV 170 - Ø 305mm - 7.6m  
BV 290 - Ø 407mm - 7.6m



#### Rain cover IP 44

BV 77  
BV 110, BV 170  
BV 290

Master rain cover increases static IP protection to a value of IP44



#### Flexible tubes white

BV 77 - Ø 305mm - 7.6m  
BV 110, BV 170 - Ø 407mm - 7.6m  
BV 290 - Ø 610mm - 7.6m



#### Air recycling kit

BV 110, BV 170  
BV 290



#### Stainless steel exhaust-pipe 1m

BV 77 - Ø 120mm  
BV 110, BV 170, BV 290 - Ø 150mm



#### Stainless steel exhaust elbow 90°

BV 77 - Ø 120mm  
BV 110, BV 170, BV 290 - Ø 150mm



#### Stainless steel chimney pot

BV 77 - Ø 120mm  
BV 110, BV 170, BV 290 - Ø 150mm

A		B	H	C	D	
INLET HOSE	Ø INLET HOSE	AIR RECYCLING KIT	HEATER	ADAPTOR RING KIT	Ø OUTLET HOSE	OUTLET HOSE
4515.553	305mm	4100.826	BV 110	4031.909	407mm	4031.401
4515.553	305mm	4100.826	BV 170	4031.909	407mm	4031.401
4031.401	407mm	4100.825	BV 290	4031.910	610mm	4031.038



AIR RECYCLING



# PORTABLE INDIRECT OIL FIRED AIR HEATERS BV 500 WITH SEPARATE RIELLO OIL BURNER



**BV 500 13R  
CENTRIFUGAL**



**BV 500 13C  
AXIAL**



**BV 500 - 13C AXIAL WITH  
AIR RECYCLING KIT AND  
FLEXIBLE TUBES**

## Features

- Clean hot air
- Very easy mobility
- Very low noise (72 dB for centrifugal model)
- Very high air pressure (770 Pa for BV 500 13CR)
- Flue gas exhaust
- Altitude compensation adjustment
- Separate Riello burner with easy nozzle change
- Easy access to the heat exchanger for cleaning
- Fuel pre-heating
- Quick connectors for electrical parts
- Summer-Winter switch for ventilation only
- Socket for remote thermostat: analog or digital
- High efficiency heat exchanger
- Stainless steel combustion chamber
- Snorkel
- Robust hook for crane hanging
- Trolley included

## Applications

- Construction sites and heating roadworks
- Workshop and warehouse space heating
- Agriculture
- Events and military and emergency space heating



Specifications	Units	BV 500-13C	BV 500-13CR
Fan type		Axial	Centrifugal
Total air pressure	Pa	443	770
Ductability	m	30	50
Air flow	m <sup>3</sup> /h	7,700	5,000
Power fan motor	W/rpm	1,500/2,750	2,000/1,600
Air outlet diameter		2 of 12" (300mm) or 1 of 16" (400mm)	2 of 12" (300mm) or 1 of 16" (400mm)
Maximum heating power	kW/Btu/h/kcal/h	150/500,000/126,000	150/500,000/126,000
Standard heating power	kW/Btu/h/kcal/h	117/400,000/101,000	117/400,000/101,000
Maximum air temperature	°C	95	95
Summer ventilation		Yes	Yes
Remote thermostat		Analog or digital	Analog or digital
Flue tube	mm	150	150
Protection	IP	IP 43	IP 43
Fuel tank capacity	l	150	150
Max. fuel consumption	l/h	13.32	13.32
Standard fuel consumption	l/h	12.19	12.19
Rated current	A	13	14
Power supply	V/Hz	220-240/1ph/50-60	220-240/1ph/50-60
Weight	kg	224	230
Product size (l x w x h)	mm	2086 x 717 x 1233	2086 x 717 x 1233





# PORTABLE INDIRECT OIL FIRED AIR HEATERS BV 500 WITH SEPARATE RIELLO OIL BURNER

TO HEAT



BV 500 has standard 2 outputs diameter 300mm (12").  
BV 500 can accept 1 way outlet diameter 400mm (16") – option



Large pneumatic wheels, forklift slots, robust rotomoulded plastic tank.



Windows which allow an easy access to the heat exchanger for cleaning. Welding performed by robots and 100% inspected.



The motor is connected to the electronic panel with a snap-on connector, allowing an easy maintenance.



The heater gets the fuel from the tank below but can also be connected to an external tank.  
Fuel filter is outside.  
Fuel pre-heater is inside, within the combustion head.



When required, in case of relevant change of altitude, it is very easy to adjust the combustion.



IP67 Waterproof Control Panel and Electrical Circuit.  
This includes: on/off button, ventilation mode. Reset button, socket for remote thermostat: analog or digital.



A leakless fuel tank closure and a big fuel level indicator.

## Optional accessories



**Analog thermostat TH5 with cable**  
3m  
10m



**Digital thermostat THD with 5m cable**



**1-way outlet**  
Ø 400mm



**Flexible ducts**  
1-way outlet  
7.6m  
15m



**Fuel line 4m**  
(are required 2 pieces per 1 unit, supply line and return line)



**Fuel scoop**



Air recycling kit for BV 500 Axial BV 500



Air recycling for BV 500 centrifugal  
Use 2 tubes - 2 x Ø 300mm



# PORTABLE INDIRECT OIL FIRED AIR HEATERS AIR-BUS WITH SEPARATE RIELLO OIL BURNER



**BV 310**



Available version  
with 4 or with  
1 outlets



**BV 470  
BV 690**



## Features

- Clean hot air
- Optional room thermostat
- Available with 4, 2 or 1 outlets
- Flue gas exhaust
- Separate Riello burner
- Summer-Winter switch for ventilation only
- Fuel pre-heating
- Electronic flame control with photocell
- Fan-limit thermostat with automatic reset
- Limit thermostat with manual reset
- Two oil filters – oil pump filter and suction filter
- Fuel pre-heat filter included
- High efficiency heat exchanger
- Stainless steel combustion chamber
- Trolley included
- On request – gas burner instead of oil burner



For applications see page 12

Specifications	Units	BV 310FS	BV 470FS	BV 690FS	BV 690FT
Heating power	kW	75	134	220	220
	Btu/h	256,000	460,000	751,000	751,000
	kcal/h	64,500	115,000	190,000	190,000
Air flow	m <sup>3</sup> /h	4,400	8,000	12,500	12,500
		Axial	Axial	Axial	Axial
Fan type					
Thermostat control		Analog or digital	Analog or digital	Analog or digital	Analog or digital
Fuel consumption	kg/h	6.4	11.3	17.5	17.5
Power supply	V/Hz	230/1ph/50	230/1ph/50	230/1ph/50	400/3ph/50
Electric power	kW	1.1	2.03	3.68	3.4
Rated current	A	6.2	8.8	16	5.8
Protection		IP43	IP43	IP43	IP43
Flue tube	Ø mm	150	200	200	200
Air outlet diameter		1 x 450	4 x 270	4 x 320	4 x 320
	mm		1 x 600	1 x 700	1 x 700
Product size (l x w x h)	mm	1654 x 750 x 1092	2230 x 875 x 1215	2340 x 998 x 1548	2340 x 998 x 1548
Weight	kg	162	225	326	333



# PORTABLE INDIRECT OIL FIRED AIR HEATERS AIR-BUS WITH SEPARATE RIELLO OIL BURNER

TO HEAT



On request:  
Radial fan version is available

## Optional accessories



**Analog thermostat**  
TH5 with cable  
3m  
10m



**Digital thermostat**  
THD with 5m cable  
For heaters made in July 2015 or later



**Top outlet**  
BV 310  
BV 470  
BV 690



**Fuel tank**  
BV 310 – 85 l  
BV 470 – 140 l  
BV 690 – 200 l



**Fuel line 4m**  
(are required 2 pieces per 1 unit,  
supply line and return line)



**Fuel scoop**



**1-way outlet**  
BV 310 – Ø 440mm  
BV 470 – Ø 600mm  
BV 690 – Ø 700mm



**2-way outlet to be applied on 1-way outlet**  
BV 310 – 2 x Ø 315mm  
BV 470 – 2 x Ø 400mm  
BV 690 – 2 x Ø 500mm



**4-way outlet**  
BV 310 – 4 x Ø 225mm  
BV 470 – 4 x Ø 270mm  
BV 690 – 4 x Ø 320mm



**Flexible 7.6m ducts**  
4-way outlet  
BV 310 – Ø 230mm  
BV 470 – Ø 305mm  
BV 690 – Ø 330mm  
2-way outlet  
BV 470 – Ø 407mm  
BV 690 – Ø 508mm  
1-way outlet  
BV 310 – Ø 450mm  
BV 470 – Ø 610mm  
BV 690 – Ø 710mm



**Perforated tubes**  
BV 310 – Ø 509mm - max. 25m  
BV 470 – Ø 611mm - max. 50m  
BV 690 – Ø 713mm - max. 50m

**Connection kit for 1-way outlet**  
BV 310 – Ø 509mm  
BV 470 – Ø 611mm  
BV 690 – Ø 713mm



**Caster**  
BV 310  
BV 470  
BV 690



**Air recycling kit**  
BV 310  
BV 470  
BV 690



**Fire damper**  
BV 310 – Ø 450mm  
BV 470 – Ø 560mm  
BV 690 – Ø 710mm



**Mounting kit for chimney 200mm**  
BV 310 – chimney Ø 150mm  
BV 470, BV 690 – chimney Ø 200mm





# PORTABLE INDIRECT OIL FIRED AIR HEATERS VA-M

## RUGGEDIZED HEATERS



**VA-M15MKII**



**VA-M40MKII**

### Optional accessories

- Remote thermostat with cable, 15m
- Remote CO monitor with cable, 15m
- Insulated, flexible air duct, Ø225x3000mm with spigot
- Storage bag for flexible duct Ø225mm
- Air distribution ducts, Ø225x6000mm
- Alternatively fuel lance for oil drum



### Features

- Can operate at temperatures down to -40°C
- Creates a comfortable working environment
- Equipment and transportation such as helicopters stay warm and ready for use, reducing wear and tear and ensuring quicker response times
- Reliable and virtually maintenance free
- Easy to transport, even over ice and snow
- Can be set up by one person without the use of tools, and is easy to operate
- Developed in close collaboration with the armed forces of NATO countries
- Chosen as the NATO standard, conforming to all NATO requirements and norms
- All units are allocated NATO stock numbers (NSN)

### Applications

- Tents
- Accommodation
- Field hospitals
- Military camps
- Relief camps
- Temporary buildings



Specifications	Units	VA-M15MKII	VA-M40MKII
Operating temperature range	°C	-40 - +25	-40 - +30
Heat output	kW	17.9	38
Air flow	m³/h	1080	2200
Sound level	dB(A)	60	60
Max. fuel consumption	l/h	1.7	3.6
Power supply	V/Hz	230/1ph/50	230/1ph/50
Max. power consumption	W	1000	1055
Air discharge temperature	°C	80	80
Flex duct connection	Ø mm	225	225
Product size (h x l x w)	mm	605 x 1360 x 490	890 x 1400 x 700
Weight	kg	93	129



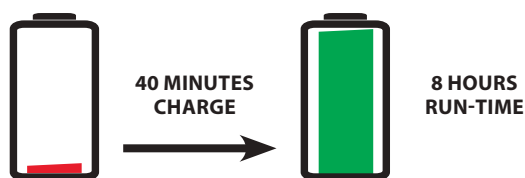
# DIRECT GAS FIRED AIR HEATERS (PROPANE-BUTANE)

## HYBRID

Ventilation of the room is necessary to prevent a deficiency in oxygen supply.



**BLP 17M DC**



### Included



3Ah Master lithium accu:  
8 hours run-time  
More than 1000 recharges



Master accu charger:  
40 minutes charging time



Power  
adapter  
for 220V  
and 110V



### Features

- It works with a cord and high tension (110-240V) or cordless with lithium battery 14V
- It is equipped with DC brushless motors and electronic board for power management which allow very low energy consumption – only 10% of a conventional AC heater
- Equipped with Master Lithium Battery BAT3
- Power adapter for 220 V AC or 110 V AC included for constant operation
- Manual ignition
- Regulator includes safety valve which stops the gas flow in case of cracks of the gas tube
- Regulator and gas hose included
- Motor with thermal protection
- Overheat thermostat
- Adjustable heat
- 8 hours battery run-time and 40 minutes charge time

### Applications

- Construction sites and renovations
- Workshops and warehouses
- Agriculture



Specifications	Units	BLP 17M DC	
Heating power	kW Btu/h kcal/h	10-16 34,200-54,800 8,600-13,800	
Pressure	bar	0.7	
Ignition		Manual	
Battery run-time	h	8	
Thermostat control		No	
Air flow	m³/h	300	
Fuel consumption	kg/h	1.16	
Power supply	V/Hz	110-240/1ph/50-60	or 14 V lithium accu
Electric power	kW	0.005	
Rated current	A	0.4	
Product size (l x w x h)	mm	471 x 188 x 293	
Weight	kg	4	
Dual voltage		Yes	



# DIRECT GAS FIRED AIR HEATERS (PROPANE-BUTANE)

## MECHANIC

Ventilation of the room is necessary to prevent a deficiency in oxygen supply.



**BLP 17M**  
**BLP 33M**  
**BLP 53M**  
**BLP 73M**



Controls for adjusting heat and consumption

### Optional accessories



Multiple bottles coupling set  
DE/AT/DK/NL/PL:  
Gas hose  
Gas regulator  
ES/HR/SI/CZ/HU/FR/CH/BE/SK/YU/BA/RO/BG/LT/LV/  
EE/BA/RU:  
Gas hose  
Gas regulator



### Features

- Manual ignition
- Electrovalve
- Safety gas valve with thermocouple
- Regulator includes safety valve which stops the gas flow in case of cracks of the gas tube
- Regulator and gas hose included
- Motor with thermal protection
- Overheat thermostat
- Adjustable heat
- Easy maintenance

### Applications

- Construction sites and renovations
- Workshops and warehouses
- Agriculture



Specifications	Units	BLP 17M	BLP 33M	BLP 53M	BLP 73M
Heating power	kW	10-16	18-33	36-53	49-73
	Btu/h	34,200-54,800	61,500-112,800	123,000-181,000	167,100-249,300
	kcal/h	8,600-13,800	15,500-28,400	31,000-45,600	42,100-62,800
Pressure	bar	0.7	0.75-1.5	0.75-1.5	0.75-1.5
Ignition		Manual	Manual	Manual	Manual
Thermostat control		No	No	No	No
Air flow	m <sup>3</sup> /h	300	1,000	1,450	2,300
Fuel consumption	kg/h	1.16	2.4	3.78	5.02
Power supply	V/Hz	220-240/1ph/50	220-240/1ph/50	220-240/1ph/50	220-240/1ph/50
Electric power	kW	0.053	0.06	0.11	0.218
Rated current	A	0.23	0.26	0.48	0.95
Product size (l x w x h)	mm	471 x 188 x 293	552 x 220 x 342	605 x 276 x 444	685 x 276 x 444
Weight	kg	4.5	7.5	13	15
Dual voltage		No	Available	Available	Available





# DIRECT GAS FIRED AIR HEATERS (PROPANE-BUTANE)

## ELECTRONIC

Ventilation of the room is necessary to prevent a deficiency in oxygen supply.



**BLP 33ET**  
**BLP 53ET**  
**BLP 73ET**



**BLP 103ET**

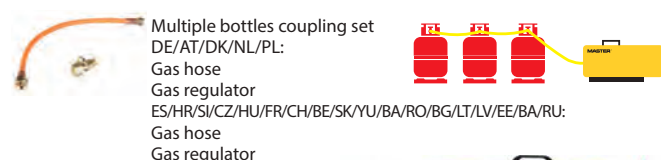
### Optional accessories



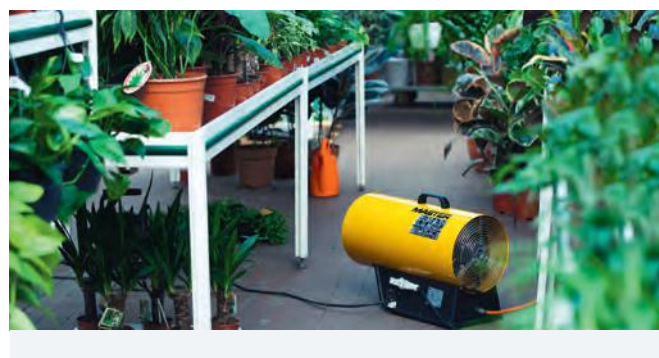
**Analog thermostat**  
**TH5 with cable**  
3m  
10m



**Digital thermostat**  
**THD with 5m cable**



Multiple bottles coupling set  
DE/AT/DK/NL/PL:  
Gas hose  
Gas regulator  
ES/HR/SI/CZ/HU/FR/CH/BE/SK/YU/BA/RO/BG/LT/LV/EE/BA/RU:  
Gas hose  
Gas regulator



### Features

- Electronic ignition
- Double electrovalve
- The ionization electrode continuously checks the presence of the flame
- Optional room thermostat
- BLP 103ET trolley included
- Regulator includes safety valve which stops the gas flow in case of cracks of the gas tube
- Regulator and gas hose included
- Motor with thermal protection
- Overheat thermostat
- Adjustable heat
- Strong and durable construction
- Easy maintenance

### Applications

- Construction sites and renovations
- Workshops and warehouses
- Agriculture



Specifications	Units	BLP 33ET	BLP 53ET	BLP 73ET	BLP 103ET
Heating power	kW	18-33	36-53	49-73	57-103
	Btu/h	61,500-112,800	123,000-181,000	167,100-249,300	194,500-351,700
	kcal/h	15,500-28,400	31,000-45,600	42,100-62,800	49,000-88,600
Pressure	bar	0.75-1.5	0.75-1.5	0.75-1.5	0.75-2.0
Ignition		Electronic	Electronic	Electronic	Electronic
Thermostat control		Analog or digital	Analog or digital	Analog or digital	Analog or digital
Air flow	m <sup>3</sup> /h	1,000	1,450	2,300	3,260
Fuel consumption	kg/h	2.4	3.78	5.02	6.66
Power supply	V/Hz	220-240/1ph/50	220-240/1ph/50	220-240/1ph/50	220-240/1ph/50
Electric power	kW	0.074	0.126	0.23	0.23
Rated current	A	0.32	0.55	1.00	1.00
Product size (l x w x h)	mm	552 x 220 x 342	605 x 276 x 444	685 x 276 x 444	895 x 324 x 624
Weight	kg	7.5	13	15	22.3



# INFRARED OIL FIRED HEATERS

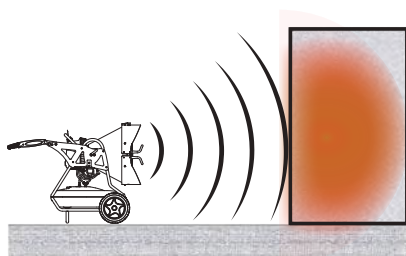
## INFRARED HEATERS

Similar to the sun, short-wave infrared radiation heats the objects without heating the air. Once objects (or walls) are penetrated with heat, they can also radiate and heat other objects. Infrared radiation heats through fog or wind.

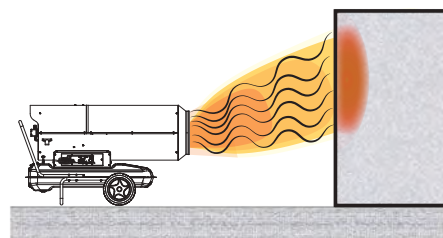
Infrared radiation runs straight, unlike hot air which flows upwards.

Infrared heaters are an excellent solution for:

- Heating objects, bodies or walls indoors and outdoors
- Drying plaster walls as infrared heat penetrates the wall and evaporates the humidity of the wall from inside, unlike an air flow heater which creates a dry surface trapping the humidity into the wall
- Saving energy, because less energy is required for achieving the same heating effect

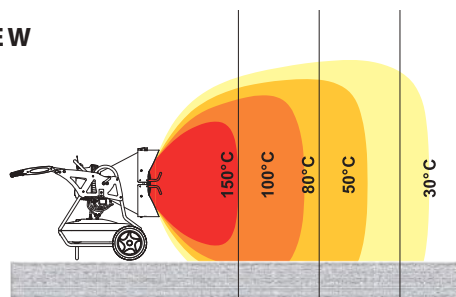


**INFRARED HEATERS  
HEAT OBJECTS**

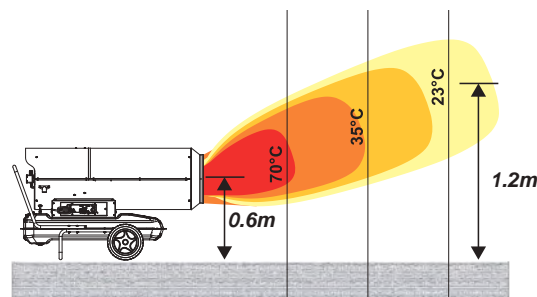


**AIR FLOW HEATERS  
HEAT AIR (AND OBJECTS)**

### SIDE VIEW

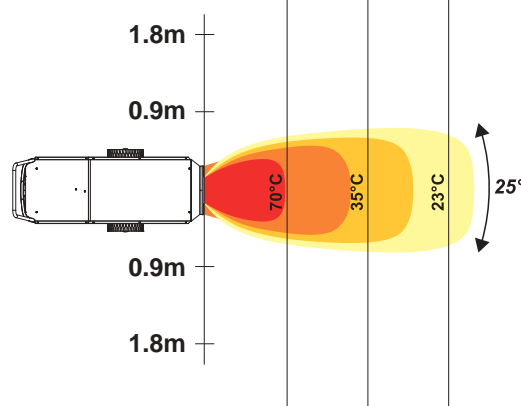
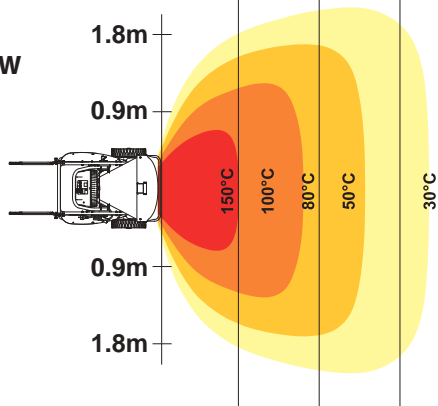


**XL 9 or XL 91**



**AIR FLOW HEATER**

### TOP VIEW





# INFRARED OIL FIRED HEATERS

## HYBRID

Ventilation of the room is necessary to prevent a deficiency in oxygen supply.



**DC 61**

### Applications

- Construction sites and renovations
- Workshops and warehouses
- Agriculture



### Features

- It works with lithium battery pack or with a cord
- 14 V only offers the highest electrical safety
- Equipped with Master Lithium Battery BAT6
- On board power adapter valid from 110V to 220V AC included
- Low noise
- Infrared heating (short wave)
- No air flow
- Electronic flame control with photocell
- Post-ventilation
- Standard oil level indicator
- ILME socket for remote thermostat: analog or digital
- Suction filter and inlet filter
- Snorkel
- Overheat thermostat
- Anti-tilt switch

### Optional accessories



**6Ah Master lithium battery pack:**  
4 hours run-time.  
More than 1000 recharges.



**Master battery pack charger**



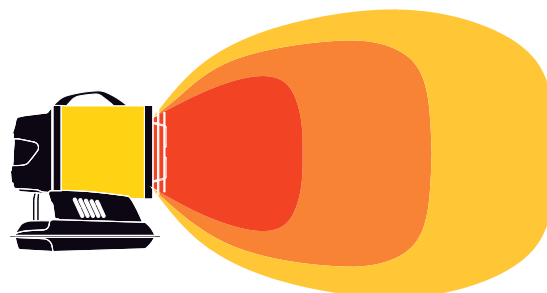
**Analog thermostat TH5 with cable**  
3m  
10m



**Digital thermostat THD with 5m cable**

Specifications	Units	DC 61
Heating power	kW	17
	Btu/h	58,000
	kcal/h	14,600
Fuel consumption	kg/h	1.35
Fuel autonomy	h	7
Thermostat control		Analog or digital
Electric power	kW	0.2
Power supply	V/Hz	110-240/1ph/50
Rated current	A	1
Tank capacity	l	11
Product size (l x w x h)	mm	560 x 345 x 575
Weight	kg	19

T Ambient 20°C	0.5m	1m	1.5m
DC 61	110°C	50°C	20°C





# INFRARED OIL FIRED HEATERS

## COMPACT

Ventilation of the room is necessary to prevent a deficiency in oxygen supply.



XL 61



XL 61 with trolley



Display and socket for remote thermostat

### Optional accessories



Trolley



Manometer

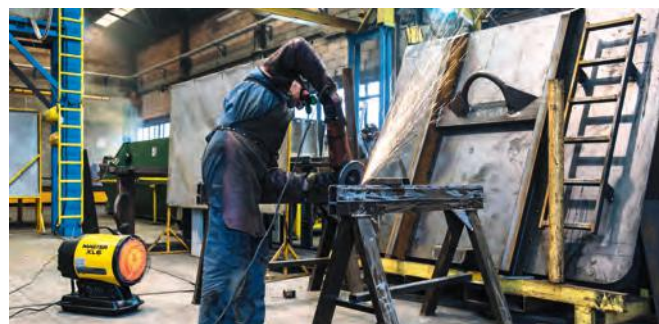


Analog thermostat  
TH5 with cable  
3m  
10m



Digital thermostat  
THD with 5m cable

Specifications	Units	XL 61
Heating power	kW	17
	Btu/h	58,000
	kcal/h	14,600
Fuel consumption	kg/h	1.35
Fuel autonomy	h	7
Thermostat control		Analog or digital
Electric power	kW	0.2
Power supply	V/Hz	220-240/1ph/50
Rated current	A	0.85
Tank capacity	l	11
Product size (l x w x h)	mm	560 x 345 x 575
Weight	kg	19
110 V		Available



### Features

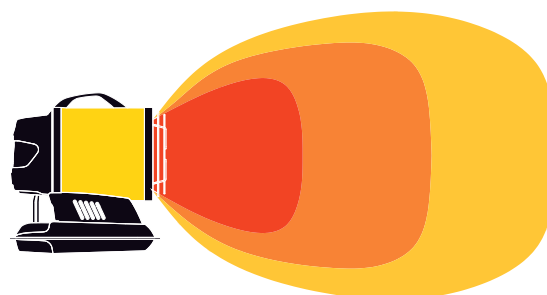
- Low noise
- Infrared heating (short wave)
- No air flow
- Electronic flame control with photocell
- Standard oil level indicator
- ILME socket for remote thermostat: analog or digital
- Suction filter and inlet filter
- Snorkel
- Overheat thermostat
- Anti-tilt switch

### Applications

- Construction sites and renovations
- Workshops and warehouses
- Agriculture



T Ambient 20°C	0.5m	1m	1.5m
XL 61	110°C	50°C	20°C







# INFRARED OIL FIRED HEATERS

## HIGH OUTPUT

Ventilation of the room is necessary to prevent a deficiency in oxygen supply.



**XL 9SR**



**XL 91**



### Features

- Low noise
- Infrared heating (short wave)
- No air flow
- Electronic flame control with photocell
- Oil level indicator
- Optional room thermostat
- Oil pump filter, suction filter and inlet filter
- Snorkel (XL 91)
- Adjustable direction/tilting
- Trolley included

### Applications

- Construction sites and renovations
- Workshops and warehouses
- Agriculture



### Optional accessories



**Fuel pre-heater**



**Analog thermostat  
TH5 with cable**  
3m  
10m



**Digital thermostat  
THD with 5m cable**  
(for XL 91 only)



**Manometer**

Specifications	Units	XL 9SR		XL 91	
Heating power	kW	29	43	29	43
	Btu/h	99,300	146,900	99,300	146,900
	kcal/h	25,000	37,000	25,000	37,000
Fuel consumption	kg/h	2.3	3.37	2.3	3.37
Fuel autonomy	h	21	14	21	14
Thermostat control		Analog		Analog or digital	
Electric power	kW	0.16		0.19	
Power supply	V/Hz	220-240/1ph/50		220-240/1ph/50	
Rated current	A	0.7		0.7	
Tank capacity	l	60		60	
Product size (l x w x h)	mm	1070 x 700 x 980		710 x 970 x 990	
Weight	kg	69		69	
110V		Available		Available	



# INFRARED ELECTRIC HEATERS

## SHORT WAVE AND LONG WAVE



**TS 3A**  
LONG WAVE



**HALL 1500**  
SHORT WAVE



### Features

- No noise
- Infrared heating
- No air flow
- Instant heat
- No oxygen consumption
- No fumes, no dust, no odours, no humidity
- 100% efficiency
- Short wave light
- Life of the lamps – 5,000 hours
- Not blinding golden lamps

### Optional accessories



Stand for HALL 1500

T Ambient 20°C	0.5m	1m	1.5m	2m
TS 3	70°C	45°C	35°C	30°C
HALL 1500	70°C	45°C	35°C	28°C
THALL 3000	85°C	50°C	40°C	30°C

### Applications

- Close environments
- Warehouses, workshops and garages
- Agriculture
- Construction
- Homes and offices
- Painters, plasterers, tile setters, plumbers, etc



Specifications	Units	TS 3A	HALL 1500	HALL 3000
Heating power	kW	0.8 - 1.6 - 2.4	1.5	1.5/3.0
	Btu/h	2,700 - 5,500 - 8,200	5,100	5,100-10,200
	kcal/h	690 - 1,380 - 2,070	1,290	1,290-2,580
Infrared radiation		Long wave	Short wave	Short wave
Power supply	V/Hz	220-240/1ph/50	220-240/1ph/50	220-240/1ph/50
Rated current	A	10.5	6.5	13.0
Switch on/off		Yes	Yes	Yes
Insulating class		1	1	1
Lamp		Ceramic infrared	Gold	Gold
Lamp life	h	No limits	5000	5000
Approximate area	m <sup>2</sup>	8	6	8
Cable		HØ7	HØ7	HØ7
Product size (l x w x h)	mm	398 x 413 x 495	735 x 650 x 1765	590 x 600 x 870
Weight	kg	7.6	4.8	12.0





# PORTABLE AIR HEATERS

## ELECTRIC



**B 2**  
**B 3**



**B 2 PTC**



**B 5**  
**B 9**  
**B 15**  
**B 22**



### Optional accessories



**Extension cord**  
B 5, B 9 – 5m  
B 5, B 9 – 10m  
B 15, B 22 – 5m  
B 15, B 22 – 10m



### Features

- Automatic reset
- Built-in room thermostat
- No oxygen consumption
- No fumes, no odours, no humidity
- Summer-Winter switch for ventilation only
- Low noise
- Motor with thermal protection
- Overheat thermostat
- Adjustable heat

### Applications

- Construction sites
- Workshop and warehouse space heating
- Agriculture
- Events and military
- Homes and offices
- Cellars



Specifications	Units	B 2 PTC	B 2	B 3	B 5	B 9	B 15	B 22
Heating power	kW	1/2	1/2	1.65/3	2.5/5	4.5/9	7.5/15	11/22
	Btu/h	3,400-6,800	3,400-6,800	5,630-11,260	8,530-17,000	51,350-30,700	25,600-51,200	37,530-75,100
	kcal/h	860-1,720	860-1,720	1,430-2,860	2,150-4,300	3,870-7,740	6,450-12,900	9,460-18,900
Air flow	m³/h	97	184	510	510	800	1,700	2,400
Power supply	V/Hz	230/1ph/50	230/1ph/50-60	230/1ph/50-60	400/3ph/50	400/3ph/50	400/3ph/50	400/3ph/50-60
Plug (male) from heater side		13A/3P	16A/3P	16A/3P	16A/5P	16A/5P	32A/5P	32A/5P
Rated current	A	8.7	8.7	14.5	7.2	13	22	32
Switch pos. 1		1 kW	Off	Off	Off	Off	Off	Off
Switch pos. 2		2 kW	Fan	Fan	Fan	Fan	Fan	Fan
Switch pos. 3/4	kW	-	1.0/2.0	1.65/3.3	2.5/5.0	4.5/9.0	7.5/15	11.0/22.0
Thermostat control		Included	Included	Included	Included	Included	Included	Included
Temperature range	°C	0-40	5-35	5-35	5-35	5-35	5-35	5-35
Protection		IP21	IP24	IP24	IP24	IP24	IP24	IP24
Product size (l x w x h)	mm	200 x 200 x 200	220 x 200 x 330	260 x 260 x 410	310 x 360 x 380	340 x 420 x 440	350 x 470 x 490	350 x 540 x 590
Weight	kg	1.9	3.7	5.1	6.4	9.3	15.0	20.0
110 V		No	No	Available	No	No	No	No



# PORTABLE AIR HEATERS

## DUCTABLE ELECTRIC



### Optional accessories



### Features

- Duct connections
- Large wheels for easy transportation
- Power cord included
- Lifting eyelets for easy transport (B 30)
- Manual reset
- Built-in room thermostat (RS 40)
- Optional room thermostat
- No oxygen consumption
- No fumes, no odours, no humidity
- Summer-Winter switch for ventilation only
- Low noise
- Motor with thermal protection
- Overheat thermostat
- Adjustable heat

 For applications see page 25

Specifications	Units	B 18	B 30	RS 30	RS 40
Heating power	kW	9/18	15/30	15/30	13/26/40
	Btu/h	30,700-61,400	51,200-102,400	51,200-102,400	44,360-136,500
	kcal/h	7,740-15,480	12,900-25,800	12,900-25,800	11,200-34,400
Air flow	m³/h	1,700	3,500	3,100	3,100
Power supply	V/Hz	400/3ph/50-60	400/3ph/50	380-400/3ph/50	380-400/3ph/50
Plug (male) from heater side		32A/5P	63A/5P	63A/5P	63A/5P
Rated current	A	26.0	43.5	43.0	58.0
Switch pos. 1		Off	Off	Off	Fan
Switch pos. 2		Fan	Fan	Fan	13 kW
Switch pos. 3/4	kW	9/18	15/30	15/30	26/40
Thermostat control		Optional TH5	Optional TH5	On board	On board
Temperature range	< 25	< 25	< 25	-5 - +35	-5 - +35
Protection		IP24	IP24	IP20	IP20
Product size (l x w x h)	mm	700 x 490 x 530	1030 x 580 x 680	910 x 710 x 800	990 x 710 x 800
Weight	kg	27	53	38	46



# MOBILE AIR COOLING COMMERCIAL



**CCX 2.5**



## Features

- Attractive compact design
- No gas – evaporative technology
- No installation required, low running and maintenance cost
- Remote control for easy operation
- Designed for easy handling and transportation
- Long uninterrupted running time without the need to refill
- Low noise
- Ionizer

## Applications

- Workshops and warehouses
- Commercial kitchens and restaurants
- Laundries
- Greenhouses and farms
- Offices
- Hotels & Spas
- Fitness centres



Specifications	Units	CCX 2.5
Cooling pad	dm <sup>3</sup>	20
Air flow	m <sup>3</sup> /h	2,500
Maximum area	m <sup>2</sup>	50
Power consumption	W	280
Power supply	V/Hz	230/1ph/50
Rated current	A	1.2
Fan speed		3
Outlet versions		Front
Water consumption	l/h	3-7
Tank capacity	l	31
Direct water connection	inch	No
Tank level control		Yes
Sound level	dB(A)	67
Product size (l x w x h)	mm	430 x 610 x 1170
Weight (without/with water)	kg	23/54



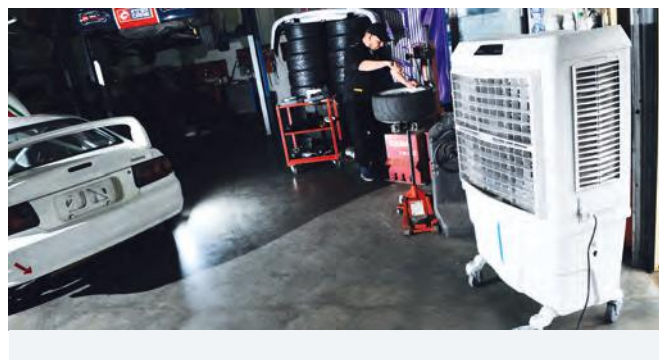
# MOBILE AIR COOLING COMMERCIAL



**BC 80**



**BC 60**



## Features

- Easy to move on wheels
- Flaps swing automatically
- No installation required
- Eco-friendly – no compressor, no gas, very low consumption
- It renovates and cleans the air from fumes, dust and odours
- Remote control
- Ionizer
- It can perfume the air
- Automatic water supply

## Applications

- Workshops and warehouses
- Commercial kitchens and restaurants
- Laundries
- Greenhouses and farms



Specifications	Units	BC 60	BC 80
Cooling pad	dm <sup>3</sup>	60	70
Air flow	m <sup>3</sup> /h	6,000	8,000
Maximum area	m <sup>2</sup>	150	180
Power consumption	W	280	330
Power supply	V/Hz	230/1ph/50	230/1ph/50
Rated current	A	1.2	1.5
Fan speed		3	3
Outlet versions		Front	Front
Water consumption	l/h	7	8
Tank capacity	l	57	100
Direct water connection	inch	½	½
Tank level control		Yes	Yes
Sound level	dB(A)	62	62
Product size (l x w x h)	mm	540 x 750 x 1400	500 x 850 x 1410
Weight (without/with water)	kg	35/92	32/92





# MOBILE AIR COOLING INDUSTRIAL



**BC 180 (30")**



**BC 340 (36")**



## Features

- For industrial application use
- No gas – evaporative technology
- Low noise
- Adjustable speed
- Automatic swing function for BC 180 only
- Time setting function
- Large water tank for longer operating hours
- Large wheels and brake allow easy movement
- No need for compressed air
- No installation, no duct work required
- Easy to use, easy to clean
- Corrosion resistant plastic casing
- Easy to maintain
- Automatic water supply
- Remote control

## Applications

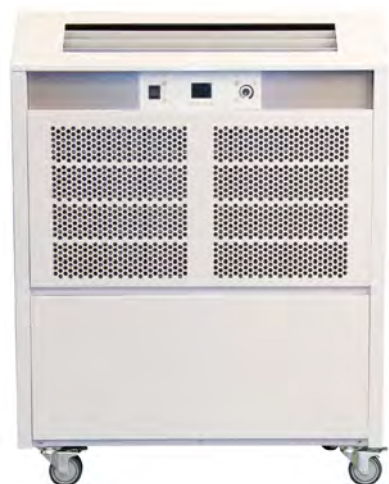
- Workshops and warehouses
- Plastic, glass, assembly and painting plants
- Cow barns
- Greenhouses



Specifications	Units	BC 180	BC 340
Cooling pad	dm <sup>3</sup>	180	340
Air flow	m <sup>3</sup> /h	15,000	20,000
Maximum area	m <sup>2</sup>	330	400
Power consumption	W	750	1100
Power supply	V/Hz	220-240/1ph/50	220-240/1ph/50
Rated current	A	4.5	4.5
Water consumption	l/h	12-18	15-20
Tank capacity	l	100	200
Direct water connection	inch	½	½
Tank level control		Yes	Yes
Product size (l x w x h)	mm	1130 x 690 x 1640	1580 x 750 x 1820
Weight	kg	58	105



# AIR-CONDITIONING COMMERCIAL



**ACT 7**



The hex unit features a speed controlled EC fan (non-UK only) that automatically adjusts to differing outside air temperatures so that the ACT 7 is always operating at its best efficiency.

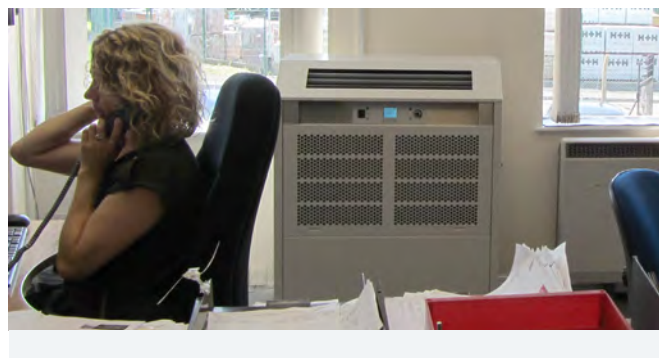
## Accessories



Additional 5m or 15m line sets (maximum length 30m per unit)  
Duct spigot kit

Specifications	Units	ACT 7	ACT 7 (UK)
Performance*			
Cooling capacity	kW	7.0 (max.)	7.0 (max.)
Power supply	V/Hz	230/1ph/50	230/1ph/50
Fuse	A	16	13
Nominal running current	A	11.2	11
Nominal power consumption	kW	2.6	2.5
Air flow (variable)	m <sup>3</sup> /h	930-1310	930-1310
Sound level @ 3m	dB(A)	53	53
Operating range (room)	°C	0-35	0-35
Operating range (outdoor)	°C	0-40	0-35
Product size (h x w x d)	mm	1070 x 852 x 420	1070 x 852 x 420
Hex size (h x w x d)	mm	520 x 560 x 280	520 x 560 x 280
Weight	kg	117	117

\* Outside conditions 28°C/60% RH



## Features

- Cooling capacity of up to 7.0kW @ 28°C/60% RH room, 28°C outside air temperature
- High efficiency cooling circuit
- Quick connect cooling line connectors – provides easy installation, without the need to recharge water lines
- Compact outdoor heat exchanger
- Outdoor heat exchanger with automatically adjusting variable speed EC fan, for high and low temperature environments (non-UK only)
- Variable indoor unit fan speed and adjustable air outlet grille
- Peristaltic pumped condensate with 30m head and high level alarm
- Castor mounted, rugged metal construction
- Up to 30m installation distance between indoor unit and heat rejection unit
- R407C refrigerant
- True air-conditioning without the exhaust air gains associated with exhaust tube units

## Options

- Forklift guides

## Applications

- Rental companies
- Event organisations
- Corporate hospitality specialists
- Data centres and server room cooling
- Facility management companies
- Utility companies
- Retail premises
- Temporary cold room cooling







# AIR-CONDITIONING INDUSTRIAL



**ACT 35**



## Features

- High capacity space chiller
- Rapid installation and flexibility of positioning
- No external refrigerant connections required
- No external ventilation or ductwork to exterior required
- Fully automatic operation
- Robust construction
- Ducted cool air when required
- Ideal for locations requiring a low temperature storage facility

## Applications

- Food packing and process areas
- Factories and workplaces
- Industrial processes
- Warehouses storing perishable goods
- Emergency back-up for cold stores
- High capacity cooling for social events



Specifications	Units	ACT 35
Power supply	V/Hz	380-415/3ph/50
Starting current	A	135
Max. running current	A	37
Min. generator required	KVA	30
Product size (indoor) (w x d x h)	mm	1730 x 1250 x 1600
Weight	kg	497
Product size (outdoor) (w x d x h)	mm	1196 x 1032 x 1616
Weight	kg	360





# MOBILE COOLING

## CONTAINER COOLING



**AC-M5W**



**AC-M5W TRAP DOOR**

### Features

- Manufactured from hot dip galvanized and powder coated steel sheet
- Top finish painting is standard NATO green, RAL 6014
- Can provide cooling at ambient temperatures up to +60°C
- Scroll compressor for high degree of reliability and low noise
- HP pressostat switching off the unit at too high ambient temperatures
- Easily controlled by a room thermostat placed inside the container
- Two speed selector for the internal fan
- "VENT-only" option, allowing ventilation without cooling
- Built-in fresh air intake
- Coarse filters in front of internal air intake as well as in front of external air intake and fresh air intake
- During transport the AC-M5W is stored inside the container

### Optional accessories

- Trap door system
- Welding frame for corrugated container
- Lifting system

### Applications

- Containers



Specifications	Units	AC-M5W
Operating temperature range, cooling	°C	20-60
Operating temperature range, heating	°C	-32 - +20
Air flow	m³/h	700
Sound level @ 1m	dB(A)	59
Refrigerant		R134a
Max. cooling capacity	kW	4.9
Heating capacity (with electric heating element)	kW	2.0
Power supply (60 Hz available)	V/Hz	230/1ph/50
Max. running current, cooling	A	9.8
Max. running current, heating	A	9.3
Locked rotor amperage (LRA), cooling	A	47
Generator requirement (300% start allowance)	kVA	4
Max. power consumption	kW	2.3
Product size (h x l x w)	mm	446 x 752 x 630
Weight	kg	79



# MOBILE COOLING

## CONTAINER COOLING



**AC-M5MKII**



**AC-M5MKII TRAP DOOR**

### Optional accessories

- Trap door system
- Welding frame for corrugated container
- Lifting system



### Features

- Manufactured from hot dip galvanized and powder coated steel sheet
- When in operation and transportation mode the trap door and AC-M5MKII provides an air tight boundary to ambient environment
- The above qualifies for CBRN/COLPRO compatibility
- The trap door unit also serves as protection against rain and extreme sun when the unit is operating
- Provides cooling at ambient temperatures up to +60°C
- NATO green, IR reflective, BS381C285 – optional colours on request
- Scroll compressor for high degree of reliability and low noise
- Easy to operate microprocessor to control temperature and comply with EMC military standard
- Two speed selector for the internal fan
- "VENT-only" option, allowing ventilation without cooling
- Possible to lock the trapdoor with a padlock or positively lock the trapdoor for under-slung transportation by helicopter

### Applications

- Containers



Specifications	Units	AC-M5MKII
Operating temperature range, cooling	°C	20-60
Operating temperature range, heating	°C	-32 - +20
Air flow	m³/h	900
Sound level @ 1m	dB(A)	49
Refrigerant		R134a
Max. cooling capacity	kW	4.7
Heating capacity (with electric heating element)	kW	2.0
Power supply	V/Hz	230/1ph/50
Max. running current, cooling	A	9.8
Max. running current, heating	A	9.3
Locked rotor amperage (LRA), cooling	A	47
Max. power consumption	kW	2.3
Product size (h x l x w)	mm	482 x 755 x 666
Weight	kg	79





# MOBILE COOLING

## CONTAINER COOLING



AC-M7C



AC-M7C CONTROL PANEL



### Features

- Manufactured from hot dip galvanized and powder coated steel sheet
- No fresh air intake, as to qualify CBRN/COLPRO compliance
- High ingress protection level
- The above qualifies for CBRN/COLPRO compatibility
- Replaceable front grill protecting the condenser coil
- Provides cooling at ambient temperatures up to +60°C
- Scroll compressor for high degree of reliability and low noise
- Easy to operate on-board thermostat displaying current room temperature
- Two speed selector for the internal fan
- Bolt-on solution
- During transport the AC-M7C can be shut off or operated if required
- Optional electric heating element

### Applications

- Containers
- Vehicles



Specifications	Units	AC-M7C
Operating temperature range, cooling	°C	22-60
Operating temperature range, heating	°C	N/A
Air flow	m <sup>3</sup> /h	3000
Sound level @ 1m	dB(A)	74
Refrigerant		R134a
Max. cooling capacity	kW	7.7
Heating capacity (with electric heating element)	kW	N/A
Power supply	V/Hz	400/3ph/50
Max. running current, cooling	A	7.8
Locked rotor amperage (LRA), cooling	A	40
Max. power consumption	kW	4.2
Product size (h x l x w)	mm	698 x 2457 x 515
Weight	kg	197





# MOBILE COOLING

## TENT COOLING



AC 24



### Features

- The AC 24 is built into a cabinet manufactured from 0.9-2.5mm galvanized and powder coated steel sheet
- Top finish painting is pure white, RAL 9010
- Cooling at outside temperatures up to +55°C
- Environmentally friendly R134a refrigerant
- High/low pressure switch ensuring a long compressor lifespan
- The unit connects to the mains power supply or to a separate diesel generator via a 10m power cable with a CEE plug
- Temperature control carried out by a room thermostat hard-wired to the air-conditioner
- Inlet and discharge openings for Ø315mm uninsulated, flexible ducts
- Easy transportation by either forklift or on the four, mounted wheels (accessory)
- Setup and operation can be done by a single person



AC 24 WITH WHEELS

### Optional accessories

- Lifting handle
- Wheels
- Air distribution for internal air distribution

### Applications

- Tents
- Field hospitals
- UN
- Relief camps
- Temporary buildings

Specifications	Units	AC 24
Operating temperature range, cooling	°C	20-55
Air flow	m³/h	2180
Refrigerant		R134a
Cooling capacity @ 49/49°C 30% RH	kW/BTU	6.0/20400
Power supply	V/Hz	230/1ph/50
Max. current	A	16
Locked rotor amperage (LRA)	A	46
Max. system pressure	bar	25
Product size (h x l x w)	mm	1110 x 919,1 x 752,3
Weight	kg	160



# MOBILE COOLING

## TENT COOLING



**AC-M7MKII  
ONE OPENING**



**AC-M7MKII  
TWO OPENINGS**

### Optional accessories

- Remote thermostat with cable, 15m
- Insulated, flexible air duct Ø315 x 3000mm incl. bag
- Non insulated, flexible air duct Ø315 x 5000mm
- Non insulated, flexible air distribution duct Ø315 x 5000mm
- Non insulated, flexible air distribution extension duct Ø315 x 2000mm
- Insulated, flexible air duct Ø225x3000mm
- Storage bag for insulated air duct Ø225
- Non insulated, flexible air distribution duct Ø225 x 6000mm



### Features

- Manufactured from hot dip galvanized and powder coated steel sheet
- Can provide cooling at ambient temperatures up to +55°C
- Connect to the mains power supply or a separate diesel generator through a 15m power cable with CEE plug
- "VENT-only" option, allowing ventilation without cooling
- Temperature control by a room thermostat placed inside the tent
- Washable and easy removable coarse filters in front of internal air intake as well as in front of external air intake
- Easy transportation, either by forklift, the four lifting hooks on top of the unit or with the two wheels
- Setup and operation can be done by a single person
- Removable wheels, which can be stowed on top of the unit

### Applications

- Tents
- Field hospitals
- Military camps
- Relief camps
- Temporary buildings



Specifications	Units	AC-M7MKII
Operating temperature range, cooling	°C	20-55
Operating temperature range, heating	°C	-20 - +20
Air flow	m³/h	2500
Sound level @ 1.5m	dB(A)	69
Refrigerant		R134a
Max. cooling capacity	kW	7.6
Heating capacity (with electric heating element)	kW	7.2
Power supply	V/Hz	400/3ph/50
Max. running current, cooling/heating	A	7.2/13
Locked rotor amperage (LRA)	A	24
Max. power consumption cooling/heating	W	3700/7700
Hose connection	Ø mm	1 x 315 or 2 x 225
Product size (h x l x w)	mm	1150 x 796 x 756
Weight	kg	190





# MOBILE COOLING

## TENT COOLING



AC-M11



### Features

- Designed for optimal utilization of a standard 20" ISO container (30 pcs)
- The AC-M11 is built into a strong metal frame with insulated panels where relevant, powder coated
- Top finish painting is standard sand colour
- Option with built in heating will heat when ambient temperature is below 20°C
- Scroll compressor for a high degree of reliability and low noise level
- Automatic phase surveillance
- Sequential start of units possible
- HP/LP pressostat switches ensuring long compressor lifetime
- Fresh air intake
- Four way fork lift handling

### AC-M11 WITH BOOSTER HEATER



### Optional accessories

- Remote thermostat with 15m cable and auto cooling/heating selection
- Insulated, flexible air duct Ø315mm x 3m incl. storage bag
- Uninsulated flexible air duct Ø315mm x 5m incl. storage bag
- Air distribution air duct Ø315mm x 6m
- Trolley with wheels
- 12 kW booster heater
- F7 filter

### Applications

- Tents
- Accommodation
- Military camps
- Relief camps
- Work camps in oil and gas industry



Specifications	Units	AC-M11
Operating temperature range, cooling	°C	20-60
Operating temperature range, heating	°C	-32 - +20
Air flow	m³/h	1700
Sound level @ 1m	dB(A)	55
Refrigerant		R134a
Nominal cooling capacity	kW	11
Heating capacity (optional)	kW	8
Power supply	V/Hz	400/3ph/50
Max. running current, cooling/heating	A	15/16
Locked rotor amperage (LRA)	A	65.5
Max. power consumption cooling/heating	W	4200/8800
Hose connection	Ø mm	1 x 315
Product size (h x l x w)	mm	735 x 1140 x 1140
Weight	kg	170





# MOBILE COOLING TENT COOLING



**AC-M16**

## Optional accessories

- Insulated duct Ø315mm
- Uninsulated ducts Ø315mm (flexible duct and air distribution duct)
- Storage bags for uninsulated ducts
- Cover for the unit
- Ground rod
- Wheels and wheel bracket (which can also hold the room thermostat during transportation)



## Features

- The AC-M16 is capable of maintaining the shelter temperature at +20-25°C when the shelter is built accordingly
- Designed for optimal utilization of a standard 20" ISO container (16 pcs)
- The AC-M16 is built into a strong metal frame with insulated panels where relevant, powder coated
- Top finish painting is standard sand colour
- Scroll compressor for a high degree of reliability and low noise level
- Automatic phase surveillance
- Sequential start of units possible
- HP/LP pressostat switches ensuring long compressor lifetime
- Fresh air intake
- Four way fork lift handling
- Easy strap down on air cargo pallets and stackable (two units on top of each other)

## Applications

- Tents
- Military camps
- Relief camps
- Work camps in oil and gas industry



Specifications	Units	AC-M16
Operating temperature range, cooling	°C	20-55
Air flow	m³/h	2200
Sound level @ 3m	dB(A)	59
Refrigerant		R134a
Nominal cooling capacity	kW	15
Power supply	V/Hz	400/3ph/50
Max. running current, cooling	A	13
Locked rotor amperage (LRA)	A	73
Max. power consumption cooling/heating	W	7700/8800
Flex. air duct connection	Ø mm	1 x 315
Product size (h x l x w)	mm	1112 x 1370 x 1080
Weight	kg	220



# MOBILE COOLING

## TENT COOLING



**AC-M18**



### Optional accessories

- Remote thermostat with 15m cable and cooling/heating selector switch
- Insulated, flexible air duct Ø400mm x 3m incl. storage bag
- Uninsulated flexible air duct Ø400mm x 5m incl. storage bag
- Air distribution duct Ø400mm x 6m
- Trolley with wheels
- F7 filter

### Features

- Designed for optimal utilization of a standard 20" ISO container (24 pcs)
- The AC-M18 is built into a strong metal frame with insulated panels where relevant, powder coated
- Top finish painting is standard sand colour
- Option with built in heating will heat when ambient temperature is below 20°C
- Scroll compressor for a high degree of reliability and low noise level
- Automatic phase surveillance
- Sequential start of units possible
- HP/LP pressostat switches ensuring long compressor lifetime
- Fresh air intake
- Four way fork lift handling
- Easy strap down on air cargo pallets and stackable (two units on top of each other)

### Applications

- Tents
- Accommodation
- Military camps
- Relief camps



Specifications	Units	AC-M18	AC-M18 (60 Hz)
Operating temperature range, cooling	°C	20-60	20-60
Operating temperature range, heating	°C	-32 - +20	-32 - +20
Air flow	m³/h	2500	2500
Sound level @ 3m	dB(A)	59	59
Refrigerant		R134a	R134a
Nominal cooling capacity	kW	17.5	17.5
Heating capacity (optional)	kW	6/16	6/16
Power supply	V/Hz	400/3ph/50	208/3ph/60
Max. running current, cooling/heating	A	16/26	33/52
Locked rotor amperage (LRA)	A	73	164
Max. power consumption cooling/heating	W	8300/variable	8300/variable
Hose connection	Ø mm	1 x 400	1 x 400
Product size (h x l x w)	mm	780 x 1450 x 1140	780 x 1450 x 1140
Weight	kg	240	243





# MOBILE COOLING

## TENT COOLING



**AC-M18 CBRN**



### Features

- The AC-M18 is built into a strong metal frame with insulated panels where relevant, powder coated
- Top finish painting is standard sand colour
- Scroll compressor for a high degree of reliability and low noise level
- Automatic phase surveillance
- Sequential start of units possible
- HP/LP pressostat switches ensuring long compressor lifetime
- Fresh air intake
- Four way fork lift handling
- Easy strap down on air cargo pallets and stackable (two units on top of each other)

### Optional accessories

- Remote thermostat with 15m cable and cooling/heating selector switch
- Insulated, flexible air duct Ø400mm x 3m incl. storage bag
- Uninsulated, flexible air duct Ø400mm x 5m incl. storage bag
- Air distribution air duct Ø400mm x 6m
- F7 filter
- Trolley with wheels
- HEPA filtration unit

### Applications

- Tents
- Accommodation
- Military camps
- Relief camps



Specifications	Units	AC-M18 CBRN
Operating temperature range, cooling	°C	20-60
Operating temperature range, heating	°C	-32 - +20
Air flow	m³/h	2500
Sound level @ 1m	dB(A)	54
Refrigerant		R134a
Max. cooling capacity	kW	17.5
Heating capacity (optional)	kW	16/20
Power supply	V/Hz	400/3ph/50
Max. running current, cooling/heating	A	16/depending on heating capacity
Locked rotor amperage (LRA)	A	73
Power consumption cooling/heating	W	8300
Hose connection	Ø mm	1 x 400
Product size (h x l x w)	mm	780 x 725 x 1140
Weight (without accessories evap/cond)	kg	137/104





# REFRIGERANT DEHUMIDIFIERS

## CONSTRUCTION AND RENTAL



**PD 300**



**PD 600**

### Options

- Condensate pump kit, humidistat, hours-run meter



### Features

- Robust
- Easy to use
- Can be cleaned by jet-wash
- Operation in temperatures down to 3°C – hot gas defrost supplied with units
- Dual voltage – units can be supplied with 110/240 volt option
- Non-marking wheels – no tyre marks left on floors

### Applications

- Building industry, restoration work
- Moisture removal in new houses
- Drying during construction
- Water removal after painting



Specifications	Units	PD 300	PD 600
Maximum capacity	l/24h	53	100
Capacity (20°C/70% RH)	l/24h	31	46
Capacity (30°C/80% RH)	l/24h	46	70
Air flow	m <sup>3</sup> /h	380	750
Power supply (AX model)	V/Hz	230/1ph/50	230/1ph/50
Dual voltage option (AJX model)	V/Hz	110/230/1ph/50	110/230/1ph/50
Recommended size of dual voltage transformer	VA	800	1400
Recommended supply fuse	A	13	13
Nominal power consumption	kW	0.65	1.07
Product size (h x w x d)	mm	850 x 510 x 480	1020 x 630 x 585
Weight	kg	45	65



# REFRIGERANT DEHUMIDIFIERS

## CONSTRUCTION AND RENTAL



Wide spaces between evaporator tubes to prevent clogging



Compact foam air filter enables it to work in very dusty spaces



Easy to use manual controls



### Features

- Long lasting metal casing
- High efficiency
- Hour counter
- Large water tank with automatic shut-off when full
- Hose connection
- Tank full indicator
- Air filter
- Hot gas defrost
- Restarts automatically after a power failure
- Large wheels and handle
- Built-in humidistat

### Applications

- Building industry, restoration work
- Water damage restoration
- Flood drying
- Protection from steam condensation
- Sewage treatment, waterworks
- Storage rooms



Specifications	Units	DH 26	DH 44	DH 62	DH 92
Capacity (30°C/80% RH)	l/24h	27	41	52	80
Air flow	m <sup>3</sup> /h	350	480	480	1000
Operating temperature range	°C	0.5-35	3-35	3-35	3-35
Operating humidity range	%	35-99	35-99	35-99	35-99
Power consumption	W	620	780	990	1600
Power supply	V/Hz	220-240/1ph/50	220-240/1ph/50	220-240/1ph/50	220-240/1ph/50
Sound level	dB(A)	46	53	53	50
Tank capacity	l	8	11	11	11
Product size (l x w x h)	mm	450 x 470 x 890	600 x 580 x 850	600 x 580 x 850	580 x 600 x 1035
Weight	kg	30	43	47	66
Dual voltage		No	Available	Available	No



# REFRIGERANT DEHUMIDIFIERS

## CONSTRUCTION AND RENTAL



**AD 740**



### Features

- Case made of shock and impact-resistant plastic
- Floor standing. Optimum mobility by two plastic wheels (D = 190mm) and folding handle
- Blue-Dry®-Technology for particularly energy-saving operation – even at low humidities and temperatures
- Fully hermetic rotary compressor
- Energy efficient axial fan
- Maintenance-friendly refrigerant circuit with service connector
- Condenser and evaporator made of copper tubes with aluminium fins
- Hot gas defrost
- Easy to use electronic eDry®

### Optional accessories

- Condensate drain hose
- Pump kit
- Spare filter
- Hose clip for discharge hose

### Applications

- Water damage restoration
- Flood drying
- Preservation
- Sewage treatment, waterworks
- Basements and cellars
- Storage and archives



Specifications	Units	AD 740
Capacity (30°C/80% RH)	l/24h	37
Air flow (speed I/II)	m³/h	450/550
Operating temperature range	°C	1-34
Operating humidity range	% RH	35-99
Max. power consumption	W	520
Power supply	V/Hz	230/1ph/50
Sound level	dB(A)	51
Condensate drain	mm	15 x 2
Product size (h x w x d)	mm	690 x 390 x 470
Weight	kg	32



# REFRIGERANT DEHUMIDIFIERS

## CONSTRUCTION AND RENTAL



**DHP 65**

### Optional accessories



Water pump  
Max. head height – 4m



Heavy duty, rotomoulded casing



Easy to open for cleaning



Stackable



### Features

- Case made of shock and impact-resistant plastic
- Ideal for general hire
- Can be cleaned by jet washing
- On board humidistat
- External humidistat socket
- Hour counter
- Large water tank with automatic shut-off when full
- Hose connection
- Tank full indicator
- Air filter
- Hot gas defrost
- Restarts automatically after a power failure
- Large wheels and handle

### Applications

- Building industry, restoration work
- Water damage restoration
- Flood drying
- Protection from steam condensation
- Sewage treatment, waterworks
- Storage rooms



Specifications	Units	DHP 65
Capacity (30°C/80% RH)	l/24h	56
Air flow	m <sup>3</sup> /h	500
Operating temperature range	°C	3-35
Operating humidity range	%	38-99
Power consumption	W	780
Power supply	V/Hz	220-240/1ph/50
Sound level	dB(A)	53
Tank capacity	l	10.5
Product size (l x w x h)	mm	570 x 530 x 700
Weight	kg	50
Dual voltage		Available





# REFRIGERANT DEHUMIDIFIERS

## RESTORATION



*CDT 30 S and CDT 40 S are fitted with a 1 kW heating element, a high pressure fan and two duct spigots, allowing connection of two flexible air ducts Ø100, each up to 5m long.*



*Digital display with integrated humidity control, energy counter, service status and easy fault finding allows optimal dehumidification.*



### Features

- Long lasting metal casing
- Quiet
- Plug and play condensate pump cassette
- Fast and energy efficient
- Digital display with integrated humidity control, energy counter, service status and easy fault finding allows optimal dehumidification
- Designed for easy handling and transportation
- Special versions available with integrated heater on CDT 30 S and CDT 40 S for ducted drying
- Remote Climate Control (see page 112)

The mobile CDT dehumidifier can be supplied with a condensate pump cassette which is fitted instead of the water container.

### Applications

- Water damage restoration
- Flood drying
- Preservation
- Sewage treatment, waterworks



Specifications	Units	CDT 30	CDT 30 S	CDT 40	CDT 40 S	CDT 60	CDT 90
Capacity (30°C/80% RH)	l/24h	30	30	39	39	62	94
Air flow	m³/h	250	350*	350	560*	725	1000
Operating temperature range	°C	3-32	3-32	3-32	3-32	3-32	3-32
Operating humidity range	%	40-100	40-100	40-100	40-100	40-100	40-100
Height with handle down	mm	736	736	823	823	903	977
Height with handle up	mm	1016	1016	1190	1190	1270	977
Refrigerant		R134a	R134a	R407c	R407c	R407c	R407c
Width	mm	426	426	542	542	542	650
Depth	mm	506	506	539	539	539	593
Weight	kg	32	34	43	46	47	62
Water container	l	7	7	14	14	14	-

\* Measured without air ducts connected



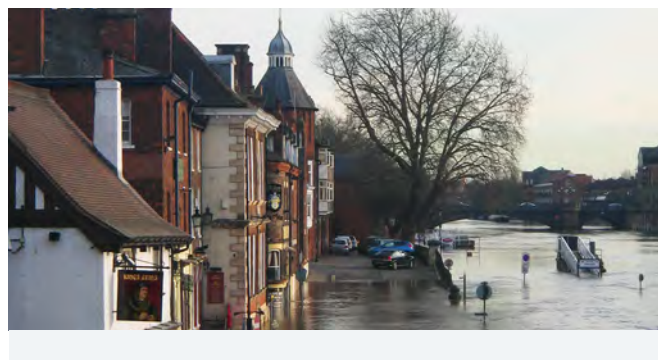
# REFRIGERANT DEHUMIDIFIERS

## RESTORATION



**AD 780-P**

**AD 750**



### Features

- Shock and impact-resistant roto moulded housing, available in your colours and with your logo
- Floor standing. Optimum mobility by two big wheels made of resistant, durable material, wide choice of grip and carry options
- Blue-Dry®-Technology for particularly energy-saving operation – even at low humidities and temperatures
- Automatic hot gas defrost
- Built-in hygrostat for variable humidity control, operating hours, neons for 'defrosting', 'tank full' and 'moisture OK' as standard
- Version AD 750-P and AD 780-P are with included condensate pump as a standard
- Calibrated kWh-counter (acc. To MID) currentless reading

### Optional accessories

- Condensate drain hose
- Spare filter
- Hose clip for discharge hose

### Applications

- Water damage restoration
- Flood drying
- Preservation
- Sewage treatment, waterworks



Specifications	Units	AD 750	AD 750-P	AD 780-P
Capacity (30°C/80% RH)	l/24h	55	55	78
Air flow	m³/h	710	710	820
Operating temperature range	°C	3-32	3-32	3-32
Operating humidity range	%	35-95	35-95	35-95
Max. power consumption	W	900	900	1250
Power supply	V/Hz	230/1ph/50	230/1ph/50	230/1ph/50
Sound level	dB(A)	53	53	55
Condensate tank	l	12	Built-in condensate pump	Built-in condensate pump
Condensate	mm	15 x 2	12 x 2	12 x 2
Product size (h x w x d)	mm	880 x 520 x 495	880 x 520 x 495	1000 x 640 x 580
Weight	kg	42	42	57



# REFRIGERANT DEHUMIDIFIERS

## RESTORATION

**AD 20**



**AD 40**



### Features

- Shock and impact-resistant roto moulded housing, available in your colours and with your logo
- Stackable unit wide choice of grip and carry options
- Easy to open, clean and maintain. Housing with integrated cable loop
- Blue-Dry®-Technology for particularly energy-saving operation-even at low humidities and temperatures
- 2 speed energy efficient EC fan
- Automatic hot gas defrost
- Additional power socket (fuse safed)
- Calibrated kWh-counter (acc. To MID) currentless reading
- Built-in condensate water pump
- CC6 Electronic with Smart Icon Control (AD 20 only)

### Optional accessories AD 20

- Spare filter
- Belt for lashing-system

### Optional accessories AD 40

- Condensate drain hose
- Pump kit
- Spare filter
- Hose clip for discharge hose

### Applications

- Water damage restoration
- Flood drying
- Preservation
- Sewage treatment, waterworks
- Basements and cellars
- Storage and archives



Specifications	Units	AD 20 Preliminary Data	AD 40
Capacity (30°C/80% RH)	l/24h	17	35
Air flow (speed I/II)	m³/h	225/300	300/400
Operating temperature range	°C	1-34	1-34
Operating humidity range	% RH	35-99	35-99
Max. power consumption	W	340	520
Power supply	V/Hz	230/1ph/50	230/1ph/50
Sound level	dB(A)	-	53
Condensate drain	mm	15 x 1.5	15 x 2
Product size (h x w x d)	mm	420 x 320 x 500	580 x 390 x 450
Weight	kg	18	25



# REFRIGERANT DEHUMIDIFIERS

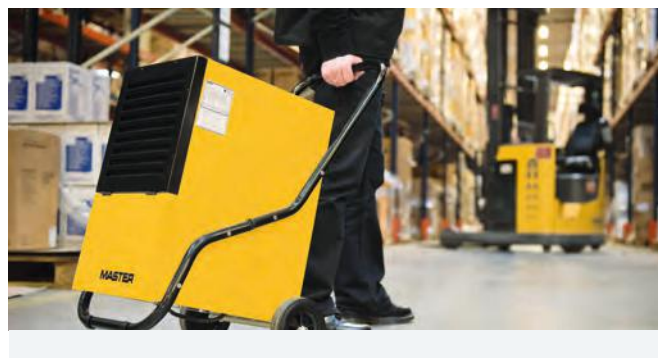
## GENERAL PURPOSE



**DH 732**



**DH 752**



### Features

- Hot gas defrost
- High efficiency
- Durable casing
- Simple operation
- Built-in humidistat
- Water tank with automatic shut-off when full
- Hose connection
- Hour counter
- Air filter
- DH 732 are stackable

### Optional accessories



**Water pump for DH 752**  
Max. head height – 4m

### Applications



- Building industry
- Flooded buildings and cellars
- Protection from steam condensation in sewage treatments and waterworks
- Storage rooms

Specifications	Units	DH 732	DH 752
Capacity (30°C/80% RH)	l/24h	30.0	46.7
Air flow	m <sup>3</sup> /h	160	350
Operating temperature range	°C	5-32	5-35
Operating humidity range	%	35-90	20-90
Power consumption	W	680	900
Power supply	V/Hz	220-240/1ph/50	220-240/1ph/50
Sound level	dB(A)	42	52
Tank capacity	l	6.5	5.7
Product size (l x w x h)	mm	358 x 338 x 550	580 x 422 x 820
Weight	kg	19.5	30.0





# REFRIGERANT DEHUMIDIFIERS

## GENERAL PURPOSE



**DH 721**



**DH 772**

### Optional accessories



**Water pump for DH 772**  
Max. forcing height – 4m

### Features

- Hot gas defrost (DH 772)
- High efficiency
- Durable casing
- Simple operation
- Built-in hygostat
- Possibility of continuous operation (24 h/day)
- Water tank with automatic shut-off when full
- Hose connection
- Hour counter (DH 772)
- Air filter

### Applications

- Cellar, garage
- Warehousing
- Offices
- Library, bookstore, archives
- Laundry, drying room in hotels
- During renovation and painting work
- Flood drying



Specifications	Units	DH 721	DH 772
Capacity (30°C/80% RH)	l/24h	20	72
Air flow	m <sup>3</sup> /h	240	850
Operating temperature range	°C	5-35	5-32
Operating humidity range	%	35-90	35-90
Power consumption	W	490	1790
Power supply	V/Hz	220-240/1ph/50	220-240/1ph/50
Sound level	dB(A)	42	60
Compressor		Piston	Rotary
Tank capacity	l	4.7	15.0
Product size (l x w x h)	mm	335 x 305 x 580	586 x 436 x 1110
Weight	kg	19/21	59/64



# REFRIGERANT DEHUMIDIFIERS

## COMMERCIAL



**AD 520**  
**AD 540**



**AD 560**  
**AD 580**

### Optional accessories

- Condensate drain hose
- Pump kit
- Spare filter
- Hose clip for discharge hose
- External dew point monitor
- Wall bracket (AD 520/540 only)



### Features

- Case made of coated sheet steel in stainless steel finish
- Units are floor standing. AD 520/AD 540 are with folding handle for comfortable carrying. Both are stackable and stabilized by four rubber bumpers. AD 560/AD 580 having four mobile castors and side handles for lifting.
- Folding handle for comfortable carrying
- Blue-Dry®-Technology for particularly energy-saving operation – even at low humidities and temperatures
- Fully hermetic rotary compressor
- Energy efficient axial fan
- Maintenance-friendly refrigerant circuit with service connector
- Condenser and evaporator made of copper tubes with aluminium fins
- Hot gas defrost
- Easy-to-use electronic eDRY®
- kWh-counter (calibrated acc. MID), currentless reading

### Applications

- Water damage restoration and flood drying
- Preservation, storage and archives
- Sewage treatment, waterworks
- Basements and cellars



Specifications	Units	AD 520	AD 540	AD 560	AD 580
Capacity (30°C/80% RH)	l/24h	19	34	60	78
Air flow (speed I/II)	m³/h	250/340	500/620	425/700	600/886
Operating temperature range	°C	1-34	1-34	1-34	1-34
Operating humidity range	% RH	35-95	35-95	35-95	35-95
Max. power consumption	W	330	530	810	1070
Power supply	V/Hz	230/1ph/50	230/1ph/50	230/1ph/50	230/1ph/50
Sound level	dB(A)	46	51	53	65
Fan speed I/II	m³/h	250/340	500/620	425/700	600/886
Condensate tank	l	7.0	7.0	14.0	14.0
Condensate drain	mm	12 x 2	12 x 2	12 x 2	12 x 2
Product size (h x w x d)	mm	524 x 320 x 360	578 x 329 x 380	720 x 400 x 450	790 x 450 x 450
Weight	kg	17	24	36	40



# REFRIGERANT DEHUMIDIFIERS

## COMMERCIAL



**AD 660**



**AD 680**

### Optional accessories

- Condensate drain hose
- Pump kit
- Spare filter
- Hose clip for discharge hose
- External dew point monitor



### Features

- Case made of coated sheet steel in stainless steel finish
- Floor standing. Excellent mobility due to stable transport frame and wheels
- Blue-Dry®-Technology for particularly energy-saving operation – even at low humidities and temperatures
- Fully hermetic rotary compressor
- Energy efficient axial fan
- Maintenance-friendly refrigerant circuit with service connector
- Condenser and evaporator made of copper tubes with aluminium fins
- Hot gas defrost
- Easy-to-use electronic eDRY®
- kWh-counter (calibrated acc. MID), currentless reading

### Applications

- Water damage restoration
- Flood drying
- Preservation
- Sewage treatment, waterworks
- Basements and cellars
- Storage and archives



Specifications	Units	AD 660	AD 680
Capacity (30°C/80% RH)	l/24h	60	78
Air flow (speed I/II)	m³/h	425/700	600/886
Operating temperature range	°C	1-34	1-34
Operating humidity range	% RH	35-95	35-95
Max. power consumption	W	810	1070
Power supply	V/Hz	230/1ph/50	230/1ph/50
Sound level	dB(A)	53	65
Condensate tank	l	14.0	14.0
Condensate drain	mm	12 x 2	12 x 2
Product size (h x w x d)	mm	900 x 540 x 500	975 x 600 x 520
Weight	kg	40	45



# REFRIGERANT DEHUMIDIFIERS

## INDUSTRIAL



PD 1500



### Features

- Plastisol coated galvanised steel cabinet
- Self contained with fully automatic operation
- Integral humidistat
- Polyester coated evaporator and condenser
- Usable from 3°C
- Ultra-powerful compressor
- High lift condensate pump
- Hot gas defrost for low temperature operation
- In-built transformer so power supply neutral not required
- Service-optimised construction for quick cleaning and inspections
- Suitable for connecting to ducted air systems
- Easily exchangeable and washable air filter

### Applications

- Industrial and commercial
- Preservation
- Sewage treatment, waterworks
- Agriculture
- Data centres



Specifications	Units	PD 1500
Maximum capacity	l/24h	300
Capacity (20°C/60% RH)	l/24h	100
Capacity (30°C/80% RH)	l/24h	220
Air flow	m³/h	2500
Sound level @ 3m	dB(A)	58
Supply (no neutral required)	V/Hz	400/3ph/50
Power input	kW	2.7
Nominal power consumption	A	6.75
Recommended fusing	A	16
Required starting current	A	30
Recommended room size construction drying	m³/m²	1700/600
Product size (l x w x h)	mm	1100 x 700 x 1313
Weight	kg	130





# REFRIGERANT DEHUMIDIFIERS

## INDUSTRIAL



**DH 7160**



Wheel foot brakes



Folding handles  
and wheels



Air filter

### Optional accessories



**Extension cord**

DH 7160 – 5m

DH 7160 – 10m



### Features

- Big air flow for fast and effective dehumidification
- Robust metal frame and housing
- Folding handles and wheels
- Wheel foot brakes
- Powerful and quiet centrifugal fan
- Continuous removal of condensed water (no tank)
- Big air filter easy to access
- Three phase compressor secured by phase protection
- Automatic defrosting

### Electronic control panel

- Can be set for continuous operation or controlled by built-in electronic humidistat
- Memory settings possible

### Applications

- Storage rooms with products sensitive to humidity, such as drugs, wooden and iron items, paper and leather products, electronic equipment
- Protection of cargo in containers from becoming damaged due to humidity



Specifications	Units	DH 7160
Capacity (30°C/80% RH)	l/24h	166
For rooms of approx.	m <sup>3</sup>	2,490
For restoration after flood	m <sup>3</sup>	996
Air displacement	m <sup>3</sup> /h	1,700
Operating temperature range	°C	5-32
Operating humidity range	%	30-90
Refrigerant		R407C
Power consumption	W	2,820
Power supply	V/Hz	380-400/3ph/50
Sound level	dB(A)	70
Compressor		Rotary
Product size (l x w x h)	mm	582 x 410 x 1624
Weight	kg	102



# REFRIGERANT DEHUMIDIFIERS

## INDUSTRIAL



AD 810-P



### Features

- Case made of coated sheet steel in stainless steel finish
- Floor standing – mobile by four castors (D = 100mm)
- Side handles for lifting
- Fully hermetic rotary compressor
- Two energy efficient axial fans
- Combo-counter (kWh and operating hours)
- Maintenance-friendly refrigerant circuit with service connector
- Condenser and evaporator made of copper tubes with aluminium fins
- Hot gas defrost
- Easy-to-use electronic eDRY®

### Optional accessories

- Condensate drain hose
- Pump kit
- Spare filter
- Hose clip for discharge hose

### Applications

- Water damage restoration
- Flood drying
- Preservation
- Sewage treatment, waterworks
- Basements and cellars
- Storage and archives



Specifications	Units	AD 810-P
Capacity (30°C/80% RH)	l/24h	105
Air flow (speed I/II)	m³/h	1000/1300
Operating temperature range	°C	1-34
Operating humidity range	%	35-95
Max. power consumption	W	1350
Power supply	V/Hz	230/1ph/50
Sound level	dB(A)	60
Condensate drain	mm	Fixed automatic condensate pump max. 4m height
Product size (l x w x h)	mm	970 x 625 x 530
Weight	kg	70



# REFRIGERANT DEHUMIDIFIERS

## HOME AND OFFICE



**DH 720**



**CONTROL PANEL**



### Features

- Attractive design
- Compact, plastic casing
- Light, easy to transport
- Quiet operation
- Simple controls
- Built in hygostat
- Tank full indicator
- UV lamp kills bacteria and germs
- Electronic panel control

### Applications

- Humid residential rooms
- House library
- Cellars
- Laundry, drying room
- Pantry
- Collector's room
- Gallery



Specifications	Units	DH 720
Capacity (30°C/80% RH)	l/24h	20
Air flow	m <sup>3</sup> /h	150
Operating temperature range	°C	5-32
Operating humidity range	%	35-95
Power consumption	W	390
Power supply	V/Hz	220-240/1ph/50
Sound level	dB(A)	48
Tank capacity	l	5
Product size (l x w x h)	mm	410 x 210 x 550
Weight	kg	11



# PROFESSIONAL WATER DAMAGE DRYING

## SIDE CHANNEL COMPRESSORS



**RB 110**



**RB 80**

**RB 40**

### Features

- Casing and impeller made of light but rugged die-cast aluminium
- Installation possible in all axle positions
- Air-cooled and 100% oil-free
- Completely ready for connection are the RB-side channel compressors available in the AERIAL VP and AB Series

### Optional accessories

- Mounting kit

### Applications

- Cavity and insulation layer drying and restoration, vacuum cleaner, and similar



Specifications	Units	RB 40	RB 80	RB 110
Air flow	m <sup>3</sup> /h	75	144	144
Max difference pressure (vacuum)	mbar	100	160	190
Max difference pressure (pressure)	mbar	92	150	160
Motor power	W	380	800	1100
Operating temperature range	°C	3-32	3-32	3-32
Power supply	V/Hz	230/1ph/50	230/1ph/50	230/1ph/50
Sound level @ 3m	dB(A)	69	69	69
Power cord	m	Not included	Not included	Not included
Product size (h x w x d)	mm	257 x 279 230	303 x 238 x 255	303 x 238 x 255
Weight	kg	13	16	18.2



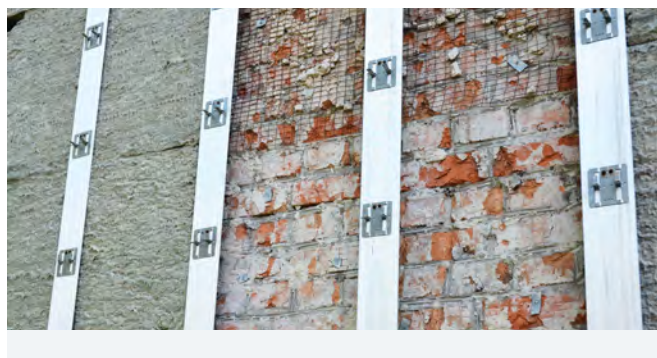


# PROFESSIONAL WATER DAMAGE DRYING

## SIDE CHANNEL COMPRESSORS



**AB 200**



### Features

- Case made of stainless steel
- Service-friendly housing construction
- Rubber feet for installation on the floor or other flat surfaces
- Easy to carry by handle
- Coarse filter at suction side
- Very quiet due to highly efficient sound reduction system
- Integrated cable keeper

### Control elements

- On/Off-switch
- Am`meter to show the counter pressure
- Device socket, fused 8A
- Energy counter (MID approved), currentless reading

### Optional accessories

- Hose
- Fittings and connectors

### Applications

- Insulating layer and cavity drying in the suction and discharge mode



Specifications	Units	AB 200
Blower type		Side channel blower
Air flow (free blowing)	m³/h	80
Max difference pressure (vacuum)	mbar	110
Max difference pressure (pressure)	mbar	130
Motor power	W	400
Operating temperature range	°C	0-38
Power supply	V/Hz	230/1ph/50
Sound level @ 3m	dB(A)	46
Power cord	m	4.5 with plug
Product size (h x w x d)	mm	330 x 310 x 365
Weight	kg	19



# PROFESSIONAL WATER DAMAGE DRYING **AERCUBE SYSTEM**

## State-of-the-art technology with a whole new emphasis

### **VP 2/VP 3 side channel blower**

The VP 2 and VP 3 side channel blowers operate with air-cooled side-channel compressors inside the extremely sturdy AERCUBE housing. Their outstanding reliability and energy-saving technology are the result of years of experience. The special eDRY® technology ensures that the drying technician is provided with only as much information as is needed to guarantee that the units always operate smoothly and efficiently.

### **VP 6 turbine**

The use of brushless variable turbines reduces the weight of the VP 6 units by almost 50% over conventional sound boxes with side-channel blowers. The VP 6 unit's multi-stage control allows the required performance to be set precisely. Replace up to four different separate units with the VP 6 and reduce the amount of equipment needed.

As with all units in the AERCUBE range, the eDRY® electronic system also helps reduce the amount of work that drying engineers are required to carry out when the VP 6 is taken into operation, which allows them to concentrate on their actual task of repairing damage.

### **VT 2 water separator**

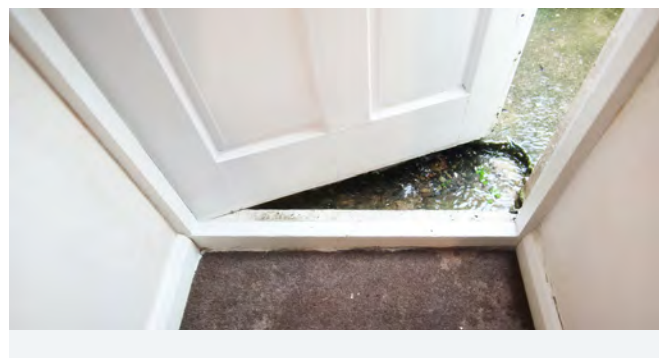
The VT 2 water separator is equipped with a high-quality wastewater pump, which is also used in industrial applications. The special pump allows the VT to be used exclusively as a "water suction device". The VT 2's electronic self-levelling function switches the sound box off before the water is pumped off and back on again as soon as the built-in water container has been pumped empty.

The unit's sealed housing enables to be used when submerged in up to 30cm of water. Thanks to the perfect hygienic installation, cleaning can be carried out especially easily and thoroughly. Two quick-release safety catches provide easy access to the interior of the units. A drain plug in the foot of the unit allows any remaining water to drain off.





# PROFESSIONAL WATER DAMAGE DRYING RESTORATION



## Features

- Air-cooled side-channel compressor, vibration-cushioned mounted
- 800 W or 1100 W motor output
- For drying areas from approx. 30-50m<sup>2</sup>
- Intelligent eDRY® electronics with full-text display
- Bar graph and multi-coloured LED for reading off the back pressure
- Operating hours and kWh counter can be read off when not connected to power
- Extremely quiet due to highly-efficient sound absorption technology
- Easy-to-open quick-release safety catches
- Wide choice of grip and carry options
- Heavy-duty power cord with magnet-holder, 4.5m
- Extremely robust AERCUBE housing
- Can be combined and stacked safely with all other products in the AERCUBE series. Fix points for AERCUBE lashing system

## Optional accessories

- Adapter plate
- Lashing strap

## Applications

- Building industry, restoration work
- Water damage restoration



Specifications	Units	VP 2	VP 3
Blower type		Side channel blower	Side channel blower
Air flow (free blowing)	m <sup>3</sup> /h	140	150
Max. difference pressure:			
Vacuum	mbar	140	170
Pressure	mbar	160	190
Motor power	W	800	1100
Operating temperature range	°C	0-38	0-38
Power supply	V/Hz	230/1ph/50	230/1ph/50
Sound level	dB(A)	48	57
Product size (h x w x d)	mm	507 x 390 x 455	507 x 390 x 455
Weight	kg	26.5	28.9



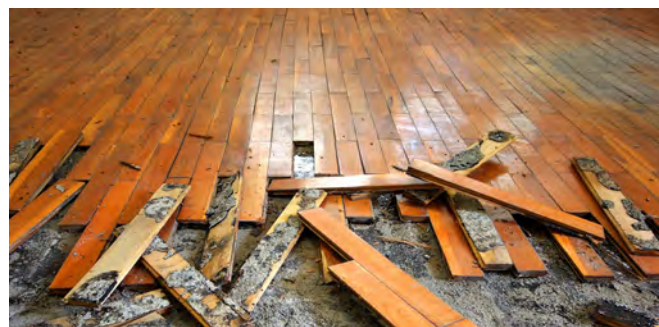
# PROFESSIONAL WATER DAMAGE DRYING RESTORATION



**VP 6**

## Optional accessories

- Adapter plate
- Lashing strap



## Features

- Multi-stage adjustable brushless turbine
- For drying areas of up to approximately 70m<sup>2</sup>
- Very low levels of sound
- Night mode
- Intelligent eDRY® electronic system with full-text display
- Bar graph and multicolour LED for displaying the counter-pressure
- Operating and kWh meter that displays without the unit having to be plugged in
- Safety shut down in the case of overloads
- The F7 cooling-air filter makes the unit hygienic and safe to operate
- Additional operational safety through integrated two-fold temperature monitoring
- Easy-to-open safety quick-release locks
- Wide choice of grip and carry options
- Heavy-duty power cord with magnet-holder, 4.5m
- Extremely robust AERCUBE housing
- Can be combined and stacked safely with all other products in the AERCUBE series. Fix points for AERCUBE lashing system

## Applications

- Building industry, restoration work
- Water damage restoration



Specifications	Units	VP 6
Blower type		Brushless high-performance turbine blower
Air flow (free blowing)	m <sup>3</sup> /h	80-250
Excess pressure	mbar	270
Low pressure	mbar	220
Motor power	W	1280
Operating temperature range	°C	0-35
Power supply	V/Hz	230/1ph/50
Sound level @ 3m	dB(A)	57
Product size (h x w x d)	mm	507 x 390 x 455
Weight	kg	15





# PROFESSIONAL WATER DAMAGE DRYING RESTORATION



VT 2



### Features

- High performance wastewater pump for industrial applications
- Static head max. 7m
- Full-text display shows all essential info on operating status
- Drain plug for quick and easy draining
- Easy-to-open quick-release safety catches
- Wide choice of grip and carry options
- Heavy-duty power cord with magnet-holder, 4.5m
- Extremely robust AERCUBE housing
- Displays the volume of pumped off water (total amount and per site, as well as the last time water was pumped off)
- Electronic self-levelling
- Press button to pump water off manually
- Can be combined and stacked safely with all other products in the AERCUBE series. Fix points for AERCUBE lashing system.

### Optional accessories

- Adapter plate
- Lashing strap

### Applications

- Building industry, restoration work
- Water damage restoration



Specifications	Units	VT 2
Pump type		Grundfos CC7
Conveyor volume	m <sup>3</sup> /h	9
Max. conveyor height	m	7
Tank volume	l	20
Operating temperature range	°C	3-38
Power consumption	W	380
Power supply	V/Hz	230/1ph/50
Product size (h x w x d)	mm	507 x 390 x 455
Weight	kg	18



# PROFESSIONAL WATER DAMAGE DRYING RESTORATION



**AERCUBE HEPA FILTER SYSTEM – HF 2**

## Features

- Efficient filter system with built-in H13 HEPA filter and G4 prefilter
- LED display informs when filter is contaminated
- Ready-to-connect, up to 270 m<sup>3</sup>/h air flow rate
- Easy-to-open quick-release safety catches
- Wide choice of grip and carry options
- Heavy-duty power cord with magnet-holder, 4.5m
- Extremely robust AERCUBE housing
- Press button to check battery status

## Optional accessories

- Adapter plate
- Lashing strap



**AERCUBE SOUND ABSORBER – SD 2**

## Features

- Reduces the noise level by as much as 19 dB
- Optional active charcoal filter to remove odours
- Ready-to-connect, up to 220 m<sup>3</sup>/h air flow rate
- Easy-to-open quick-release safety catches
- Wide choice of grip and carry options
- Heavy-duty power cord with magnet-holder, 4.5m
- Extremely robust AERCUBE housing

## Applications

- Building industry, restoration work
- Water damage restoration



Specifications	Units	HF2
Inserted air filter		Each 1 pc. is included with the delivery: – prefilter G4 – HEPA-Filter H13 acc. EN1822 (Separation MPPS > 99.95%)
Max. air flow	m <sup>3</sup> /h	270
Control/operation		LED indicator for filter change and button for battery check
Product size (h x w x d)	mm	260 x 390 x 490
Weight	kg	6

Specifications	Units	SD 2
Max. air flow	m <sup>3</sup> /h	220
Product size (h x w x d)	mm	300 x 390 x 490
Weight	kg	6



# PROFESSIONAL WATER DAMAGE DRYING

## CALIBRATED ENERGY METER



**CC4 MID**



### Features

- Compliant energy meter (MID-compliant), currentless reading
- Tamper-proof with a standard padlock (4-digit lock)
- Extremely robust, shock-resistant and UV-resistant rotationally moulded plastic housing.
- Robust and easy-care surface
- 5 year warranty on all PE housing parts
- User-friendly by fast closing clamps
- High stability – even during operation
- Wide choice of grip and carry options
- Heavy-duty power cord with magnet-holder, 4.5m
- Can be stable and reliable combined and stacked with all AERIAL AERCUBE-products

### Applications

- Construction and water damage drying
- Power consumption monitoring



TO DRY

Specifications	Units	CC4 MID
Number of sockets		4 x built-in plug socket with cover
Fusing	A	16
Power supply	V/Hz	230/1ph/50-60
Product size (h x w x d)	mm	293 x 234 x 346
Weight	kg	4.5



# ADSORPTION DEHUMIDIFIERS

## DOMESTIC AND COMMERCIAL



**ASE 200**



**ASE 300**



### Features

- Can be perfectly combined with AERIAL sound boxes AB and VP
- Case made of stainless steel and powder coated sheet steel
- Floor standing and stabilised by four rubber bumpers
- High-performance ECODRY G3-rotor for maximum water absorption and extremely high mechanical firmness of the surface
- Stackable, quiet, maintenance friendly
- Dynamic, safe and self-regulating PTC heating element
- Energy efficient radial fan
- Air filter on the process air inlet
- On/Off-switch
- Built-in hygostat for variable humidity control
- Combo counter standard

### Optional accessories

- Replacement filter
- PE hose 50mm
- Thermaflex hose 80mm/100mm

### Applications

- Building industry, restoration work
- Water damage restoration
- Cellars
- Sewage treatment, waterworks



Specifications	Units	ASE 200	ASE 300
Capacity (20°C/60% RH)	l/24h	18.75	25.7
Air volume – dry air/regeneration air	m <sup>3</sup> /h	210/110	300/110
Ext. pressure – dry air/regeneration air	Pa	150/50	150/50
Operating temperature range	°C	-10 - +35	-10 - +35
Operating humidity range	%	10-95	10-95
Nominal power consumption	W	694	1040
Power supply	V/Hz	230/1ph/50	230/1ph/50
Sound level	dB(A)	48	57
Duct sizes:			
Air inlet	Ø mm	125	125
Dry air outlet	Ø mm	1x80 or 2x50	1x100 or 2x50
Regeneration air outlet	Ø mm	80	80
Product size (h x w x d)	mm	285 x 290 x 395	370 x 335 x 430
Weight	kg	14	18





# ADSORPTION DEHUMIDIFIERS

## INDUSTRIAL



**DTM 3300**



### Features

- Weather proof
- Heavy duty outer frame
- Lifting eyes
- Stackable (3 high)
- Forklift guides
- Insulated housing in stainless steel
- PTC reactivation heater, eliminates the risk of overheating and allows step-less capacity control
- Touchscreen PLC controller, with humidity control via built in probe
- Rotation guard, filter alarm, run-time-meter, service alarm and fan run on timer as standard
- Fan speed control

### Applications

- Temporary climate control
- Water damage
- Restoration drying
- Outdoor rental
- Dry air storage
- Military equipment
- Power stations and buildings



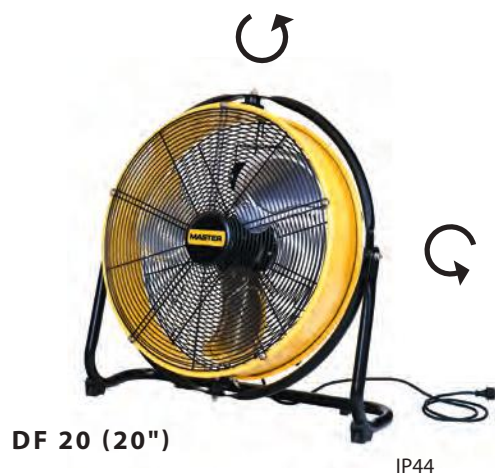
TO DRY

Specifications	Units	DTM 3300
Capacity (20°C/60% RH)	kg/h	14.7
Dry air flow (at 430 Pa available ext. pressure)	m <sup>3</sup> /h	3300
Wet air flow (at 300 Pa available ext. pressure)	m <sup>3</sup> /h	550
Sound level	dB(A)	70.4
Reactivation power	kW	18
Filter class		4
Product size (l x w x h)	mm	1309 x 1060 x 1266
Weight	kg	205



## AIR CIRCULATORS

# LARGE METAL



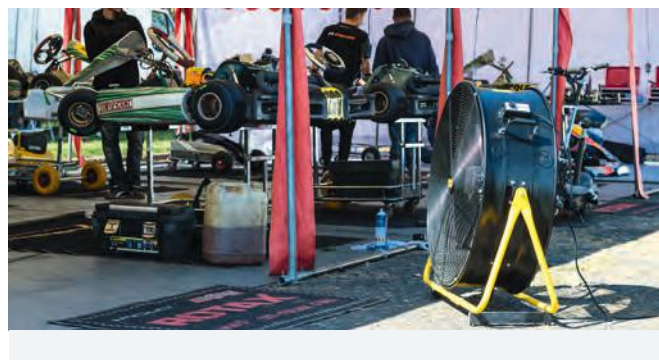
**DF 20 (20")**

IP44



**DF 30 (30")**

**DF 36 (36")**



### Features

- Adjustable air stream
- 360° rotation
- DF 20 has vertical and horizontal 360° rotation
- DF 20 can be hung on walls or ceilings
- Powder coated casing
- Each model has different types of air distribution

### Applications

- Workshops
- Warehouses
- Restaurants
- Greenhouses
- Farms



Specifications	Units	DF 20	DF 30	DF 36
Air flow ERP	m³/h	6,600	10,200	13,200
Air flow IE	m³/h	6,600	24,000	27,600
Fan type		Axial	Axial	Axial
Outlet diameter	mm	500	750	900
Fan speed		3	2	2
Power consumption	W	98/100/107	280/315	392/412
Power supply	V/Hz	220-240/1ph/50	220-240/1ph/50	220-240/1ph/50
Protection		IP44	IP20	IP20
Product size (l x w x h)	mm	690 x 200 x 675	910 x 350 x 935	1030 x 380 x 1100
Weight	kg	9	32	41



# BLOWERS AND AIR CIRCULATORS

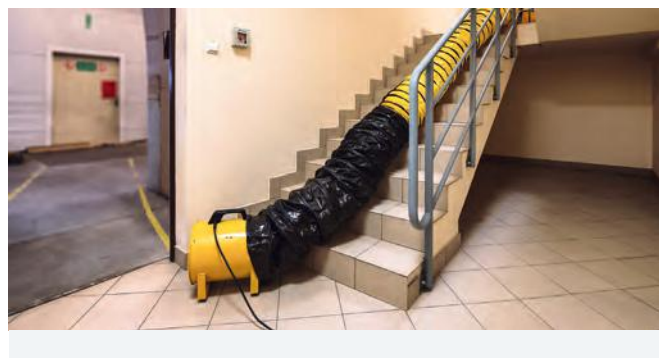
## COMPACT METAL



**BLM 4800 (8")**



**BLM 6800 (12")**



### Features

- Robust and durable construction
- Metal casing
- Easy to use and transport
- High air flow
- Motor with thermal protection
- Ducting connection on inlet and outlet side

### Optional accessories



**Flexible ducting 7.6m**  
BLM 4800 – Ø 250mm  
BLM 6800 – Ø 340mm



**Dust bag - 3m**  
BLM 4800  
BLM 6800  
Dust bag filtration level – EPA 10

### Applications

- Workshops
- Warehouses
- Commercial kitchens
- Laundries
- Greenhouses
- Farms



Specifications	Units	BLM 4800	BLM 6800
Air flow	m <sup>3</sup> /h	1500	3900
Max. air pressure	Pa	245	373
Fan type		Axial	Axial
Fan speed		1	1
Power consumption	W	230	350
Power supply	V/Hz	220-240/1ph/50	220-240/1ph/50
Outlet diameter	mm	227	317
Inlet diameter	mm	250	340
Air current		Blow out/suction	Blow out/suction
Protection		IP44	IP44
Product size (l x w x h)	mm	250 x 305 x 230	343 x 383 x 317
Weight	kg	6.4	9.5



# BLOWERS AND AIR CIRCULATORS

## COMPACT PLASTIC



**BL 4800 (8")**  
**BL 6800 (12")**



**BL 8800 (16")**



**CD 5000**

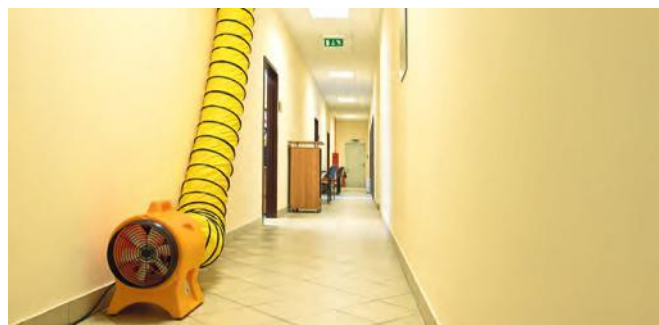
### Optional accessories



**Flexible ducting 7.6m**  
BL 4800 – Ø 205mm  
BL 6800 – Ø 305mm  
BL 8800 – Ø 407mm



**Dust bag – 3m**  
BLM 4800  
BLM 6800  
BL 8800  
Dust bag filtration level – EPA 10



### Features (BL models)

- Robust and durable construction
- Easy to use and transport
- High air flow
- Ducting connection

### Features (CD model)

- Flat diffuser
- Robust and durable construction
- Easy to use and transport
- Equipped with an additional socket for series connection

### Applications

- Workshops
- Warehouses
- Commercial kitchens
- Laundries
- Greenhouses
- Farms



Specifications	Units	BL 4800	BL 6800	BL 8800	CD 5000
Air flow	m <sup>3</sup> /h	750	3900	7800	2640
Max. air pressure	Pa	245	388	496	500
Fan type		Axial	Axial	Axial	Radial
Fan speed		1	1	1	3
Power consumption	W	250	750	750	384/452/550
Power supply	V/Hz	220-240/1ph/50	220-240/1ph/50	220-240/1ph/50	220-240/1ph/50
Outlet diameter	mm	200	300	400	120 x 420
Air current		Blow out/suction	Blow out/suction	Blow out/suction	Blow out
Protection		IP44	IP44	IP44	IP24
Product size (l x w x h)	mm	340 x 250 x 370	470 x 370 x 520	510 x 530 x 580	510 x 420 x 480
Weight	kg	7.2	14.7	19.0	14.2





BLOWERS AND AIR CIRCULATORS

# AIR CIRCULATOR



AIRMAXX 2000



Features

- Case made of stainless steel and powder coated sheet steel
- Service-friendly housing construction
- Plastic feet on the bottom and laterally for upright or horizontal set up on the floor or other flat undergrounds
- Easy to carry by handle, slim dimensions
- Cable keeper
- Power-full and energy saving radial fan
- Optionally switchable heater
- Air inlet through filter G4
- On/off switch
- Switch for heater

Optional accessories

- Hose
- Air filter

Applications

- Building drying
- Water damage drying



Specifications	Units	AIRMAXX 2000
Air flow	m³/h	2000
Max. operating temperature range	°C	40
Sound level	dB(A)	63
Total power consumption*	W	2550
Power supply	V/Hz	230/1ph/50
Product size (h x d x w)	mm	225 x 440 x 410
Weight	kg	12

\* incl. heater



# AIR FILTRATION

## AIR PURIFIER



**AMH 100**



### Features

- Air cleaning by circulation of air with different filters
- Case made of steel sheet, powder coated
- Service-friendly housing construction
- Quick fasteners for tool-free filter change
- Rubber feet for installation on the floor or other flat surfaces
- Easy to carry by handle
- Powerful and energy saving radial fan
- Hose connector for hose Ø 200mm at air inlet and air outlet
- On/Off-switch and operation time counter

Different filters available:

- Pre-filter G4
- Fine dust filter F9
- HEPA-filter H13
- Active carbon filter

### Optional accessories

- G4 coarse filter
- Filter for fine dust (F9)
- Filter for suspended particulate (H13)
- Active charcoal filter
- Hose

### Applications

- With pollutants and/or mould contaminated areas



Specifications	Units	AMH 100
Air flow	m <sup>3</sup> /h	1,600
Operating temperature range	°C	1-34
Power consumption	W	280
Power supply	V/Hz	230/1ph/50
Product size (h x d x w)	mm	420 x 390 x 580
Weight	kg	19



# MOBILE VENTILATION

## CONTAINER VENTILATION



**HXM 100**



**EASY TO CHANGE FILTERS**



### Features

- Designed for easy mounting in 20" or 40" containers
- Operating range up to +60°C
- Simple user interface for adjusting the fresh air volume
- Indoor service hatches for checking and replacing filters
- Alu-zinc sheet metal finish and white painted front cover
- G4 filter
- CE-marked
- ErP 2015 compliant

### Applications

- Containers



### Optional accessories

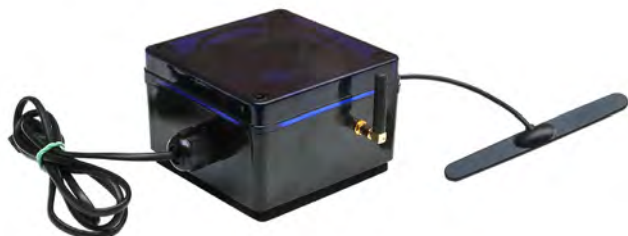
- Package with different types of Ø100mm ducting, flexible ducting, 90° bends, ducting connections, and sand trap for mounting outside container wall in desert areas or harsh environment.

Specifications	Units	HXM 100
Operating temperature range	°C	0-60
Air flow	m³/h	110
Sound level @ 1m	dB(A)	43
Power supply	V/Hz	230/1ph/50
Nominal power consumption	W	25
Air duct connection	Ø mm	100
Product size (h x l x w)	mm	360 x 1140 x 235
Weight	kg	25.5





# REMOTE CLIMATE CONTROL INTELLIGENT MONITORING



**IMC (GSM UNIT)**



**IMS (SENSOR)**



**IMR (ON/OFF UNIT)**

## Installation

- Ready to use and easy installation using Android App in few minutes
- Multiple temperature and humidity sensors on each system
- Sensors with up to 5-years lifetime

## Cloud technology

- Humidity and temperature data etc. presented in dashboard
- Access from any location from any platform
- Remote programming of each installation
- Designed for scalability
- Reduces the need for control visits on sites
- Usable in surveillance of temperature and humidity in building construction

## Features

- Mobile Cloud-based system (GSM) transmitting temperature, humidity data and power consumption from sites to a web dashboard
- Documents the process through data and graphs in real-time showing temperature, humidity, saturated vapour pressure, dew point, water content, kW, kWh
- Reduce the need for control inspections to a minimum
- Remote on/off of equipment using power
- High accuracy sensors +/- 1.8%
- Alarms programmable on sensor level and email notification if thresholds are exceeded
- Archive of former cases

## Features integrated with CDT dehumidifiers

- CDT on/off by remote control from dashboard
- Reading of CDT sensor (humidity and temperature)
- Reading of power consumption and power consumption aggregated
- Alarms programmable and email notification if thresholds are exceeded

Specifications	Units	IMC (GSM unit)
Capacity		Up to 32 sensors per system
Power	V	230
Product size (l x w x h)	mm	170 x 160 x 90
Transmitting		GSM-signal present

Specifications	Units	IMS (sensor)
Power		3 pcs alkaline AAA
Transmitting	mhZ	Wireless 433
Size sensor (l x w x h)	mm	85 x 65 x 65
Size probe (l x Ø)		40 x 14
Accuracy probe	%RH	+/- 1.8 with long term stability
Temperature range probe	°C	-40 - +90
Humidity range probe	%RH	0-100 (not in water)



# REMOTE CLIMATE CONTROL INTELLIGENT MONITORING

With IMCS you follow from remote what the heaters and the dehumidifiers are doing.

IMCS is an innovative system for the remote control of the climate in the room using GSM.

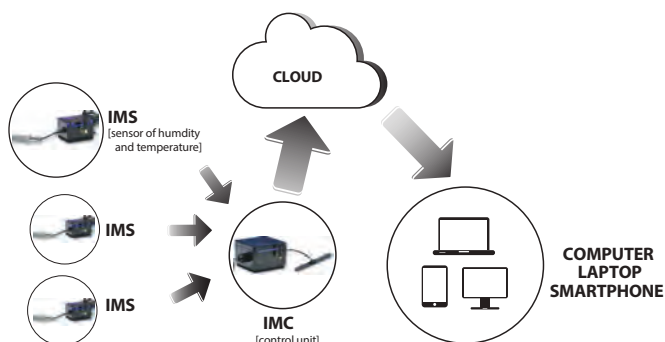
It allows:

**MONITORING:** IMCS monitors the function of dehumidifiers or heaters installed in a room

**RECORDING:** IMCS records the level of humidity or temperature in the room, giving a secure documentation about the job done

**REDUCING COSTS:** IMCS reduces operating costs because there is no need to visit the site and, once the level of humidity or temperature is achieved, the equipment can be stopped remotely.

## How IMCS works



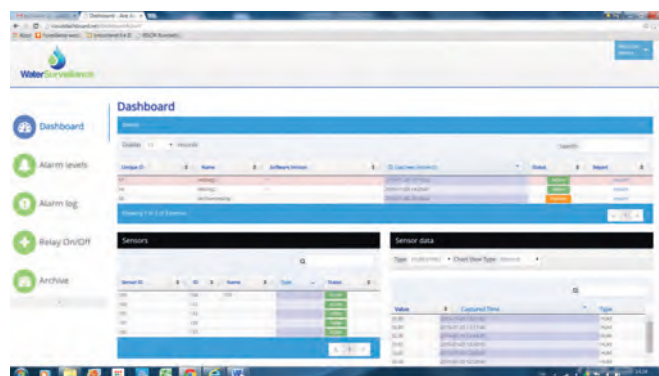
The **IMS** SENSORS measure the temperature and the humidity in the room and send the information to the **IMC**, the GSM COMMUNICATION UNIT.

The **IMC** sends the information to the Cloud.



With the computer or a tablet you can access to the cloud and read in a **DASHBOARD** the following information:

- Temperature
- Humidity
- Running time
- Energy consumption



## Remote climate **DASHBOARD**

IMCS components:

- Administration of any number of damage cases
- Geographical position available and route making
- QR codes to scan IMC and get information or scan more sensors
- Alarm administration and Alarm receivers
- Turn dehumidifiers and heaters on/off
- All data in real time

## Components

IMCS consists of:

**IMS:** The wireless climate sensor IMS measures temperature and humidity in the room and communicates with the IMC unit.

**IMC:** This unit collects the data from several IMS units (up to 32 sensors) and sends data via GSM to the cloud.

**IMR:** This can be connected between the power plug and the heater or dehumidifier and allows to remote or automatically turn on/off the heater or dehumidifier.

## Dantherm Group

### Dantherm Group A/S

Marienlystvej 65  
DK-7800 Skive  
Denmark  
t. +45 99 14 90 00

### Dantherm A/S

Marienlystvej 65  
DK-7800 Skive  
Denmark  
t. +45 96 14 37 00

### Dantherm Ltd.

Unit 12, Galliford Road  
Maldon CM9 4XD  
United Kingdom  
t. +44 (0)1621 856611

### Dantherm S.p.A.

Via Gardesana 11  
37010 Pastrengo (VR)  
Italy  
t. +39 045 6770533

### Dantherm Sp. z o.o.

ul. Magazynowa 5a  
62-023 Gądk  
Poland  
t. +48 61 65 44 000

### Dantherm AS

Løkkeåsveien 26  
3138 Skallestad  
Norway  
t. +47 33 35 16 00

### Dantherm AB

Fridhemsvägen 3  
602 13 Norrköping  
Sweden  
t. +46 (0)11 19 30 40

### Dantherm AG

Im Vorderasp 4  
8154 Oberglatt ZH  
Switzerland  
t. +41 44 851 51 51

### Dantherm GmbH

Oststraße 148  
22844 Norderstedt  
Germany  
t. +49 40 526 8790

### Dantherm SP S.A.

C/Calabozos  
6 (Polígono Industrial)  
28108 Alcobendas, Madrid  
Spain  
t. +34 91 661 45 00

### Dantherm LLC

Transportnaya 22/2  
142800, Stupino  
Moscow  
Russia  
t. +7 (495) 642 444 8

### Dantherm SAS

23 rue Eugène Henaff  
69694 Vénissieux Cedex  
France  
t. +33 4 78 47 11 11

### MCS China

Unit 2B, No. 512  
Yunchuan Road  
Baoshang, Shanghai, 201906  
China  
t. +8621 61486668

### Dantherm Dubai

Suite #1009  
Prism Tower, Business Bay  
Dubai  
United Arab Emirates  
t. +971 56 831 7466